

Switzerland County, Indiana Profile

KDHHS Community Needs Assessment 2010

Switzerland County Summary

- Switzerland County has a population of 9,675 and has a slow growth rate of 0.5 which mirrors that for Indiana. There is a net migration into the county. By 2020, the population will be 11,041.
- The ethnicity is 97.6% white.
- The unemployment rate is 7.9% in Switzerland County, lower than the Indiana rate of 10.1%.
- The average annual household income is \$42,209, compared to \$48,010 for Indiana and \$52,029 for the nation. In Switzerland, 23.9% of the families are below the poverty level, compared to 15.9% of Indiana families, and 16.5% of families in the nation. 26.8% of the children in Switzerland County are below the poverty level.
- In 2007, 26.3% of all adults age 25+ had less than a high school diploma.
- In Switzerland, 26.8% of those age 18+ are uninsured, compared to 27% in Indiana and 27.3% in the nation. 864 children in Switzerland County are enrolled in Hoosier Healthwise. 8.1% of individuals with insurance have Medicaid, a higher percent than Indiana/4.9% or the nation/4.5%.
- The teen birth rate for Switzerland County in 2007 was 36.3 per 1,000 females age 15-17. This is significantly higher than the rate for Indiana of 22 per 1,000.
- The rate of mothers smoking during pregnancy is 29.6% in Switzerland County, compared to 18.5% in Indiana. In Switzerland, there is a 9.6% low birth weight, compared to 8.5% in Indiana.
- In 2009, 30% of alcohol related fatalities in Switzerland County had a Blood Alcohol Concentration (BAC) of 0.1 or higher compared to 29% for Indiana.
- Switzerland County has a shortage of health care professionals. All areas of Switzerland County are considered medically underserved. Switzerland County has a shortage of mental health professionals.
- The rate of chronic bronchitis in Switzerland County, is 3.4%, similar to the Indiana rate of 3.2%. The rate of emphysema in Switzerland is 1.38%, similar to the Indiana rate of 1.28%.
- There are 379 adults with serious mental illness in Switzerland County and 78 seriously emotionally disturbed children.
- The stroke death rate per 100,000 population in 2007 was 67.9 for Switzerland County compared to 44.5 for Indiana and 45.1 for the nation.

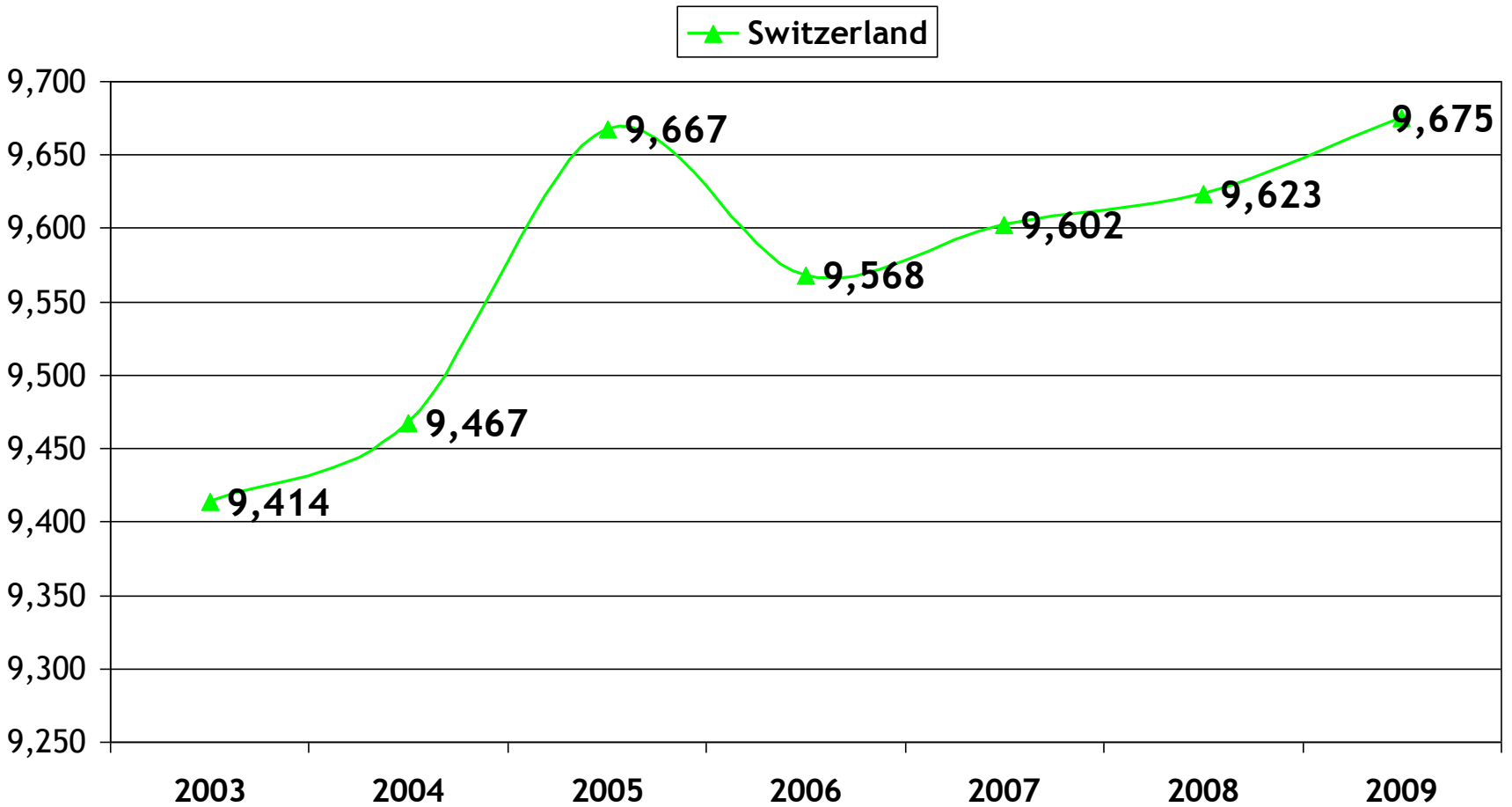
Total Population and Geographic Data

2009 Estimation

| Total Population and Geographic Data | | | |
|---|--------------------|----------------|---------------|
| | Switzerland | Indiana | Nation |
| Total Population | 9,675 | 6,423,113 | 307,006,550 |
| Persons per sq. mi. | 43 | 179 | 87 |
| Total Housing Units | 5,221 | 2,795,024 | 129,065,264 |
| Land Area (sq. miles) | 221 | 35,867 | 3,537,438 |
| Water Area (sq. miles) | 2 | 551 | 256,645 |

Historical Population

Estimated on July 1st each year



Population Change

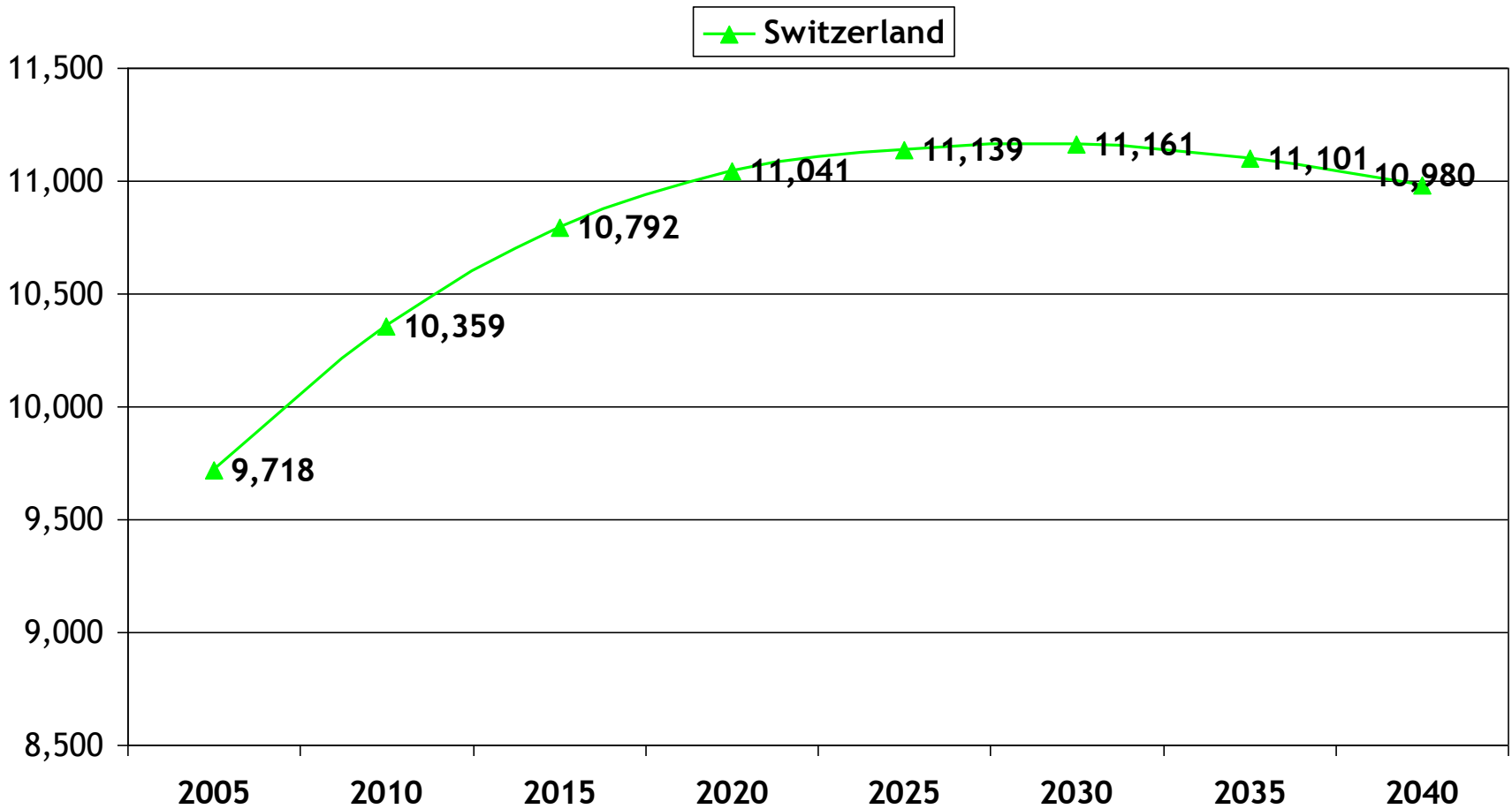
Estimated, July 1, 2008 - July 1, 2009

| Location | Total Population Change | Natural Increase | | |
|-------------|-------------------------|------------------|--------|--------|
| | | Total | Births | Deaths |
| Indiana | 0.5 | 32,591 | 88,704 | 56,113 |
| Switzerland | 0.5 | 16 | 113 | 97 |

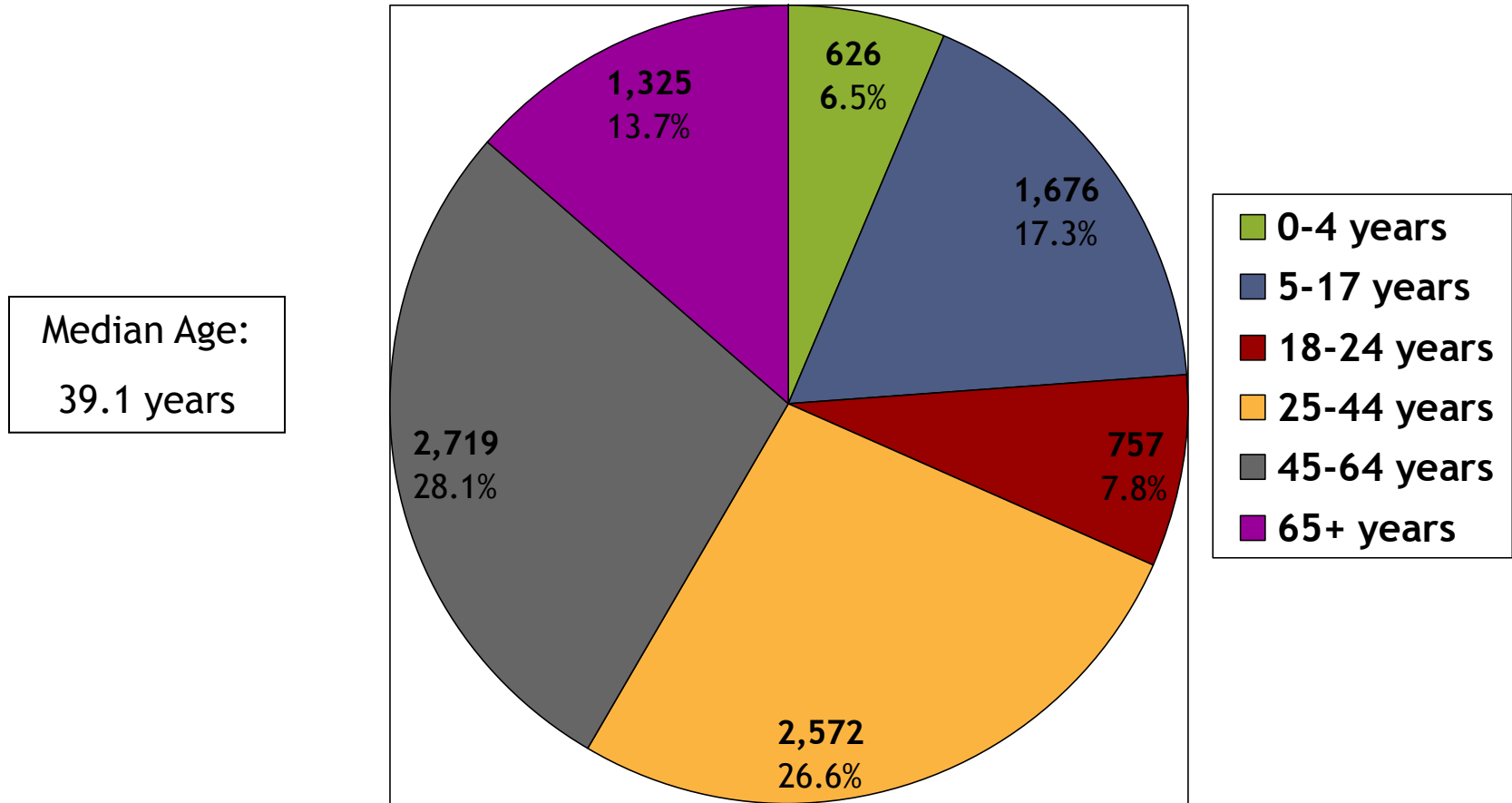
| Location | Net Migration | | |
|-------------|---------------|-------------------|--------------|
| | Total | Net International | Net Internal |
| Indiana | 2,389 | 9,194 | -6,805 |
| Switzerland | 40 | 1 | 39 |

Rates per 1,000 average population

Population Projection



Population Estimates in Age in 2009



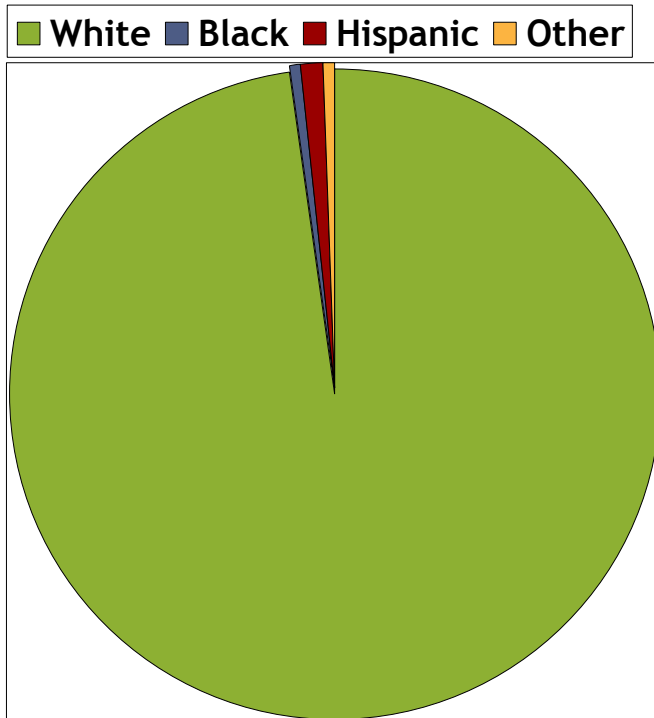
Race / Ethnicity

2008 Estimation

| Race / Ethnicity (2005) | | | |
|-------------------------|-------------|---------|--------|
| | Switzerland | Indiana | Nation |
| White | 97.6% | 83.2% | 65% |
| Black | 0.6% | 9.1% | 12.8% |
| Asian | 0.1% | 1.4% | 4.5% |
| Two or More Races | 0.5% | 1.2% | 1.7% |
| Hispanic origin | 1.1% | 5.2% | 15.4 |

Race

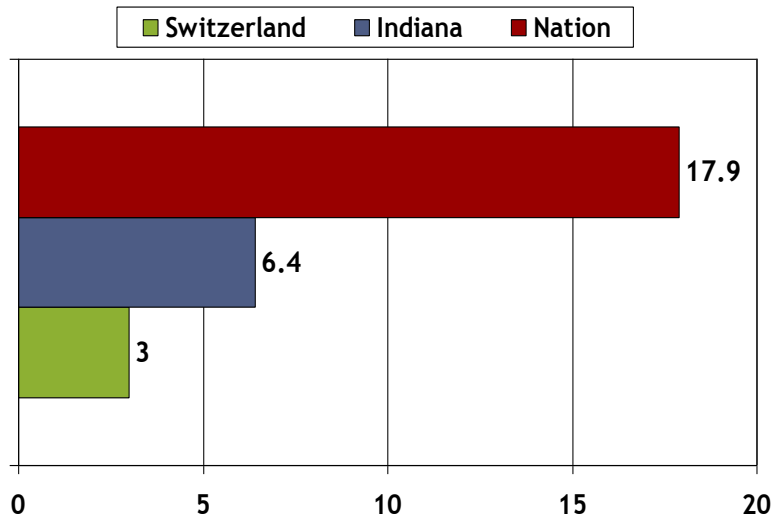
Persons Reporting One Race Only



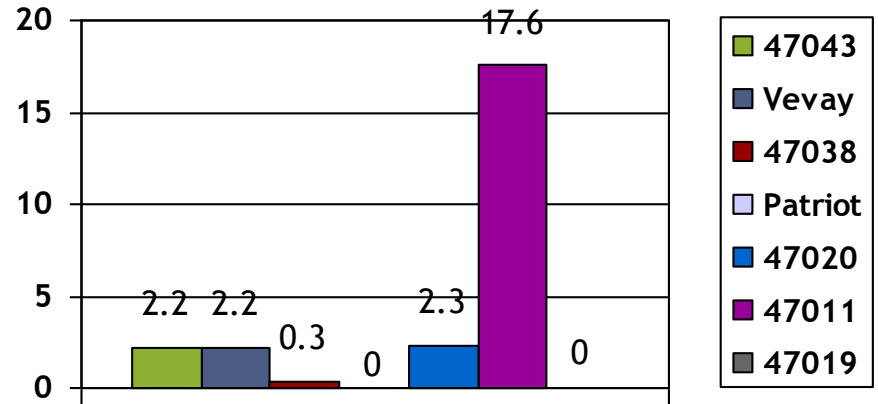
| | Total | % of Total |
|----------|-------|------------|
| Total | 9,675 | 100 % |
| White | 9,452 | 97.7% |
| Black | 58 | .6% |
| Hispanic | 117 | 1.2% |
| Other | 48 | .5% |

Other includes American Indian, Alaska Native, Native Hawaiian, and other Pacific Islander, in addition to other races.

Speak a Language other than English in the Household

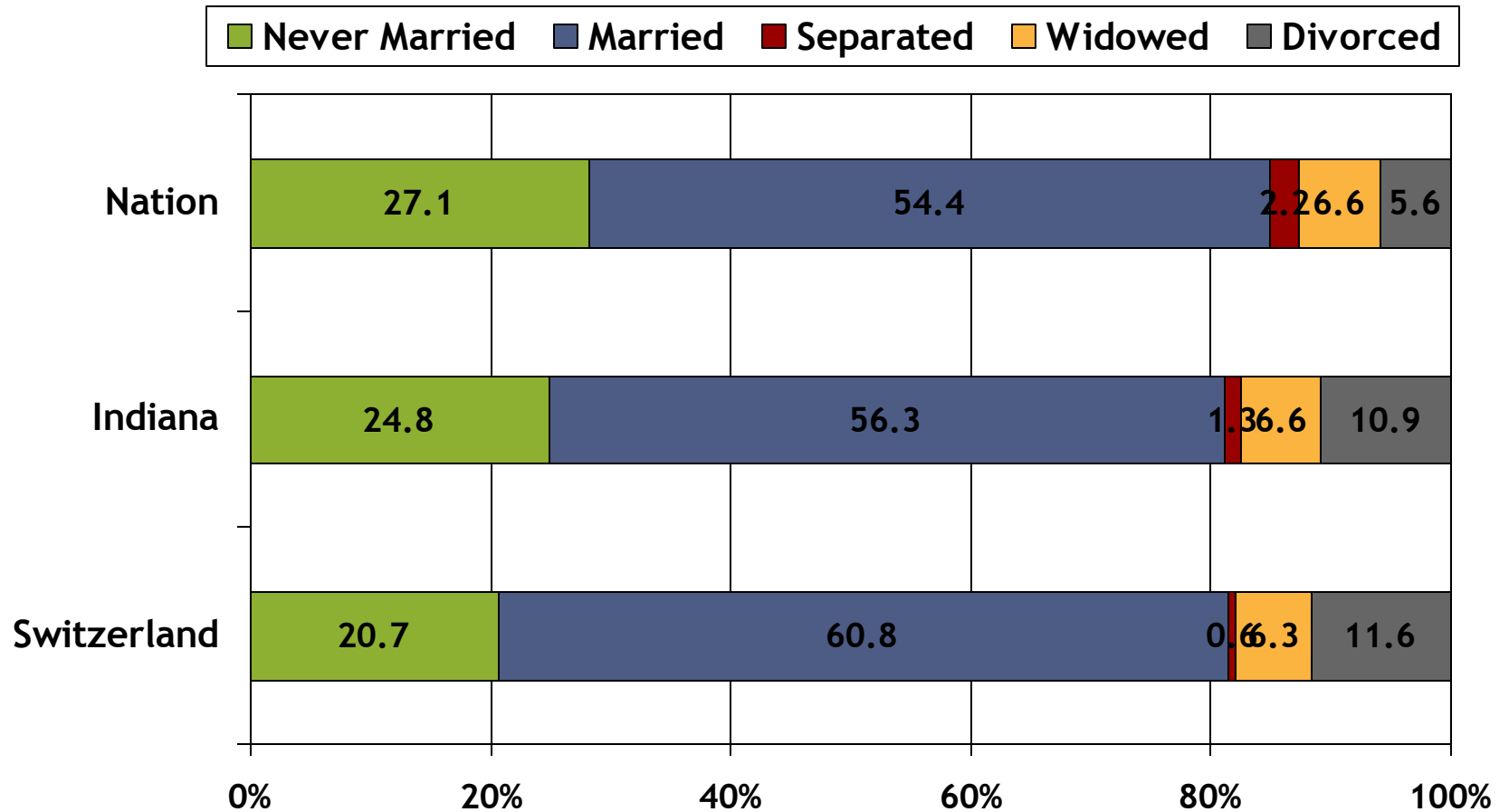


| Total | |
|-------------|------------|
| Nation | 46,951,595 |
| Indiana | 362,082 |
| Switzerland | 449 |



| | Total |
|---------|-------|
| 47043 | 106 |
| Vevay | 36 |
| 47038 | 5 |
| Patriot | 0 |
| 47020 | 23 |
| 47011 | 115 |
| 47019 | 0 |

Marital Statistics

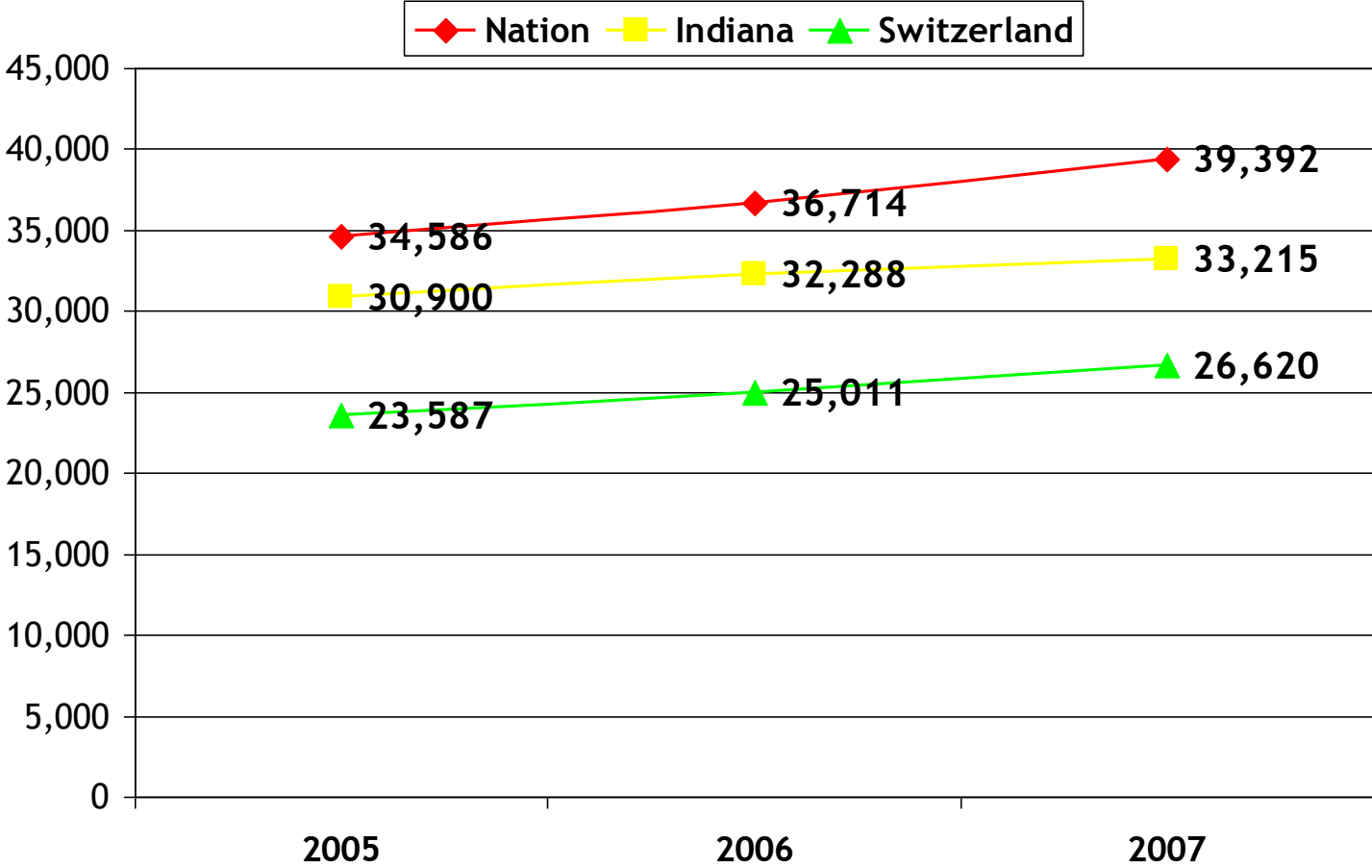


Single Parent Families

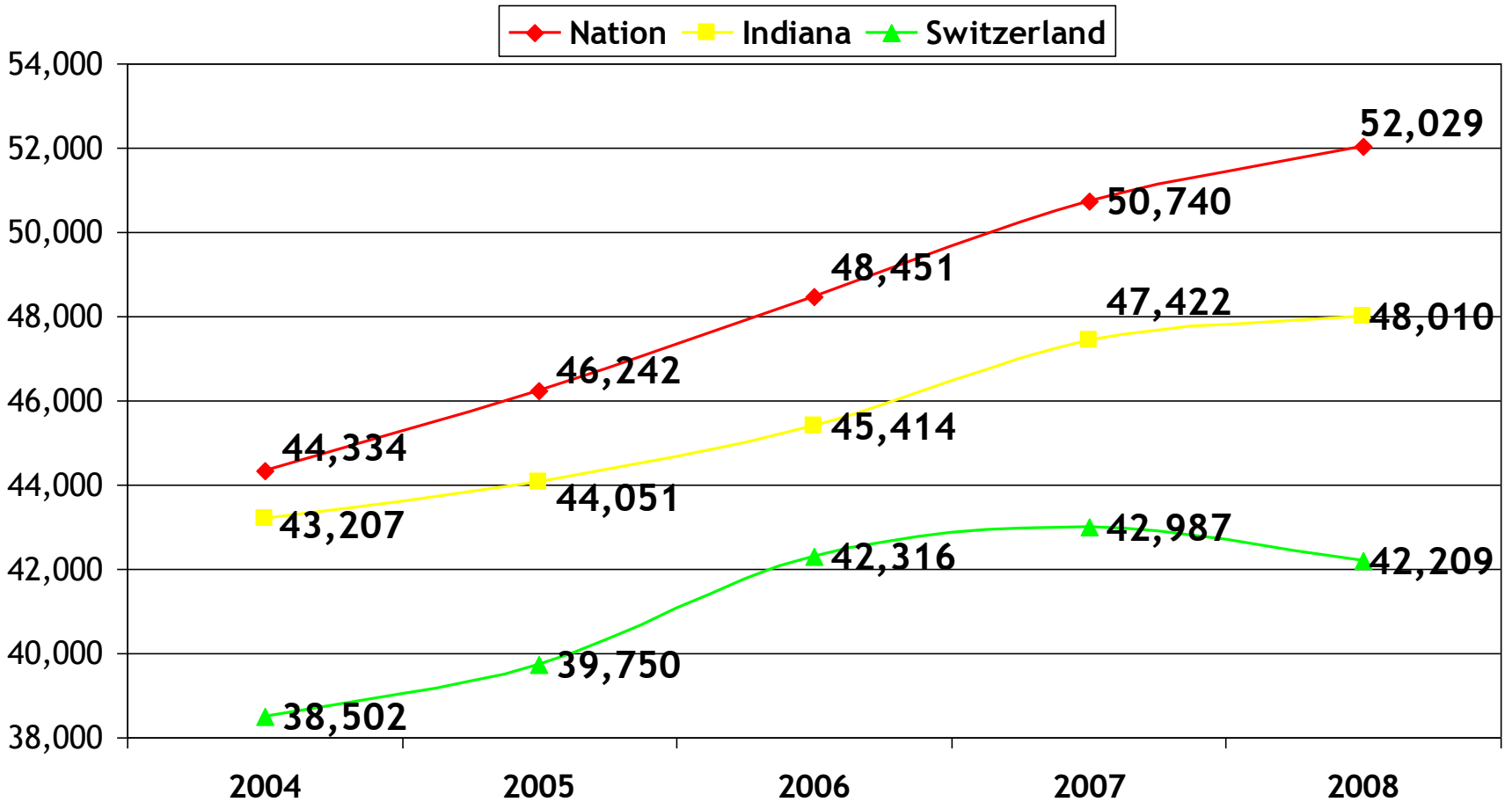
| Percentage of Families with a Single Parent | |
|---|------|
| Nation | 33.8 |
| Indiana | 32.4 |
| Switzerland | 52.0 |

| Percentage of Single Parent Families in Poverty | |
|---|------|
| Nation | 30.7 |
| Indiana | 27.6 |
| Switzerland | 31.0 |

Per Capita Income



Household Income (estimated)

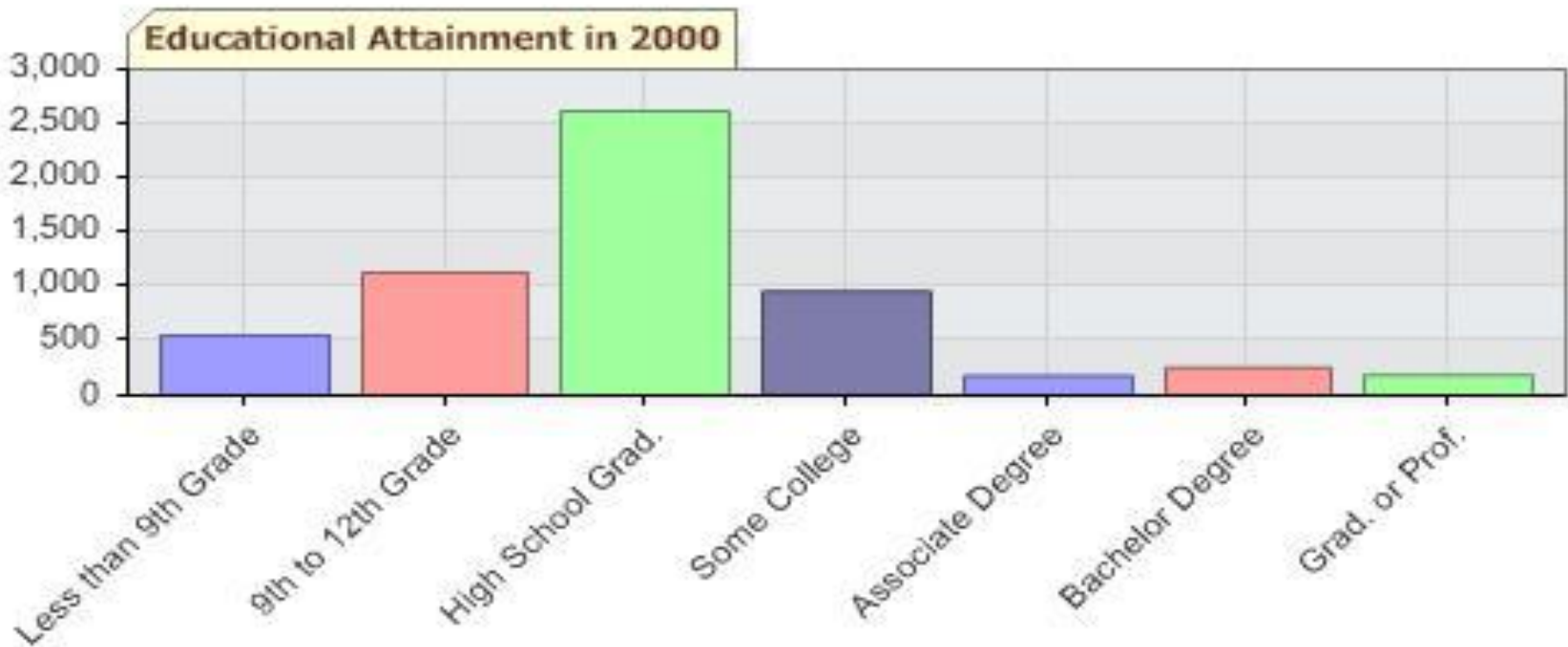


Source: US Census Bureau, Housing and Household Economic Statistics Division, Small Area Estimated Branch - 2009

Poverty

| Locale | Ages 5 - 17 in Families below Poverty | % of Families below Poverty | Individuals below Poverty | % of Individuals below Poverty | % of Children in Poverty, Age 0-18 (2004) | % of Children in Poverty, Age 0-18 (2008) |
|-------------|---------------------------------------|-----------------------------|---------------------------|--------------------------------|---|---|
| Nation | 8,549,526 | 16.5% | 39,108,422 | 13.2% | No Data Available | 18.2% |
| Indiana | 176,397 | 15.9% | 799,567 | 12.9% | 15.7% | 17.9% |
| Switzerland | 386 | 23.9% | 1,561 | 16.3% | 18.8% | 26.8% |

Educational Attainment



| 2007 | Percentage of Adults 25+ with Less than a High School Diploma |
|-------------|---|
| Nation | 14.5 |
| Indiana | 13.6 |
| Switzerland | 26.3 |

Health Insurance

Percent of Adults Age 18+

| Location | Have Medical/Hospital/Accident Insurance | No Medical/Hospital/Accident Insurance |
|-------------|--|--|
| Nation | 72.7 | 27.3 |
| Indiana | 73.0 | 27.0 |
| Switzerland | 73.2 | 26.8 |

Source of Health Insurance

Percent of Adults Age 18+

| Location | Place of Employment | Medicare | Medicaid | Through a Union |
|-------------|---------------------|----------|----------|-----------------|
| Nation | 43.6 | 11.5 | 4.5 | 3.5 |
| Indiana | 44.2 | 12.0 | 4.9 | 3.1 |
| Switzerland | 37.6 | 16.4 | 8.1 | 2.2 |

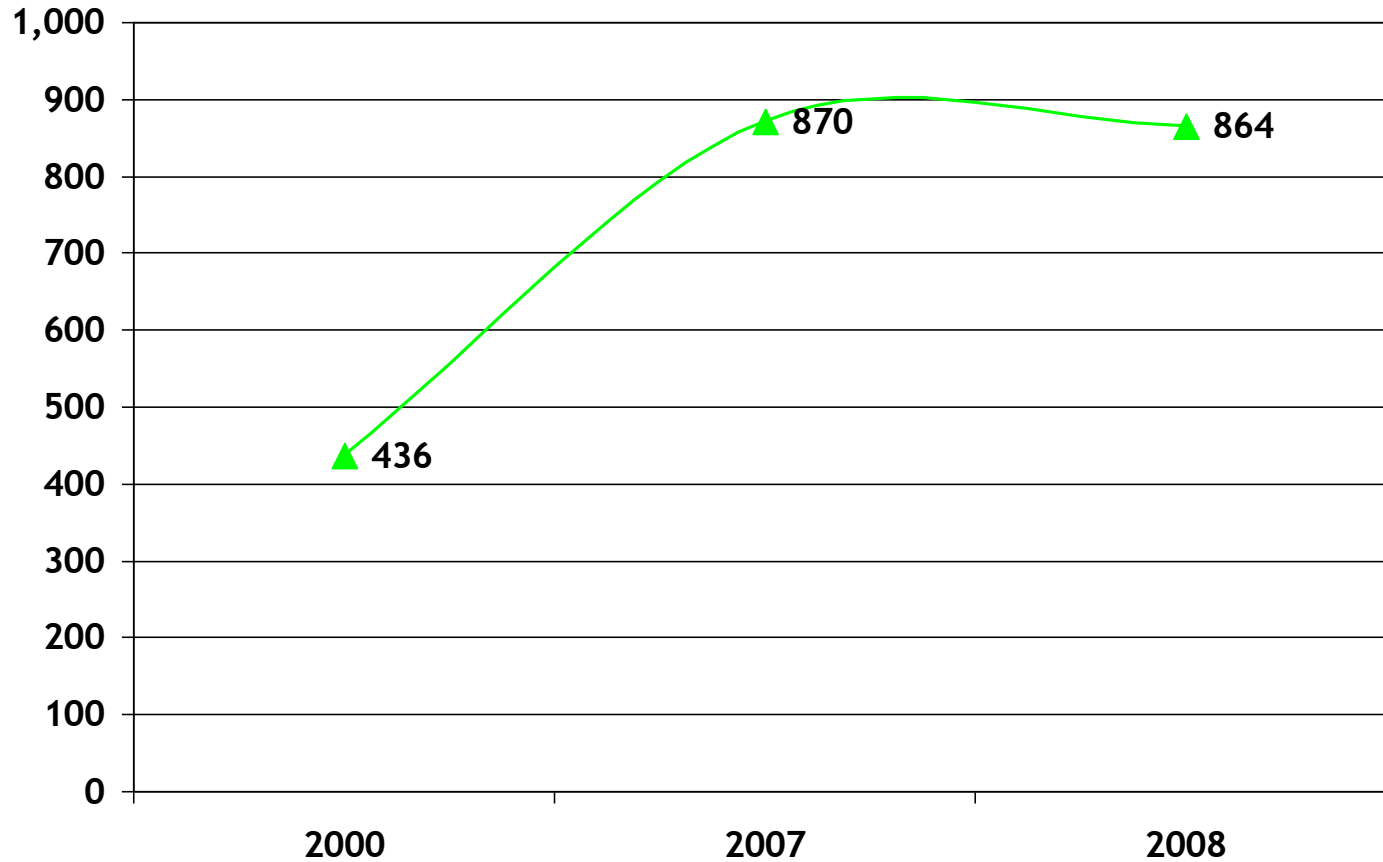
Source of Health Insurance

As a percentage

Based on Inpatient Records of Resident Citizens - 2009

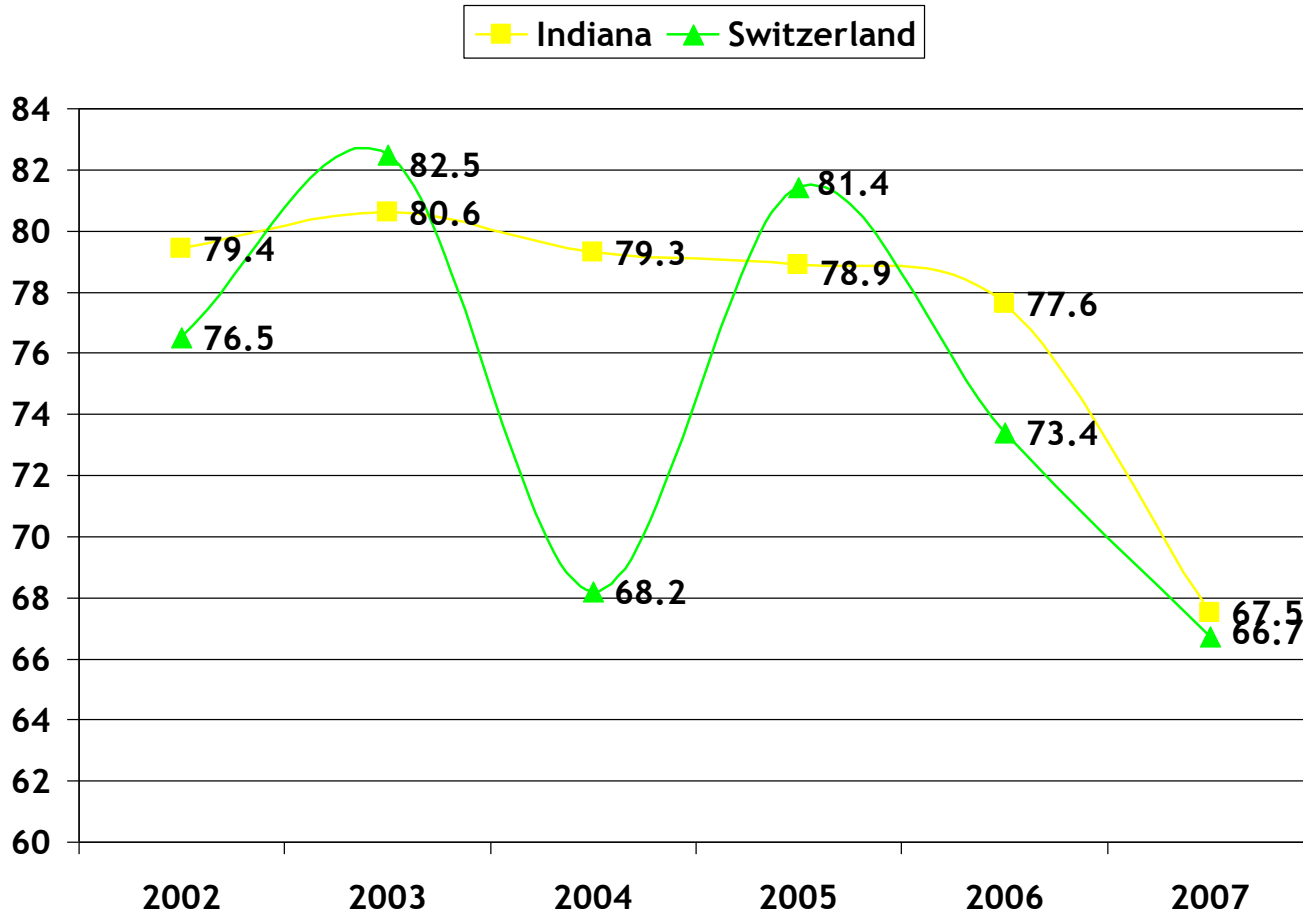
| Type of Payment | Indiana | Switzerland |
|----------------------|---------|-------------|
| Commercial Insurance | 45.8 | 27.4 |
| Medicaid | 5.6 | 12.0 |
| Medicare | 37.5 | 45.6 |
| Self Pay | 4.0 | 8.2 |
| Other Government | 1.3 | .4 |
| Other/Unknown | 5.8 | 6.4 |

Children Enrolled in Hoosier Healthwise



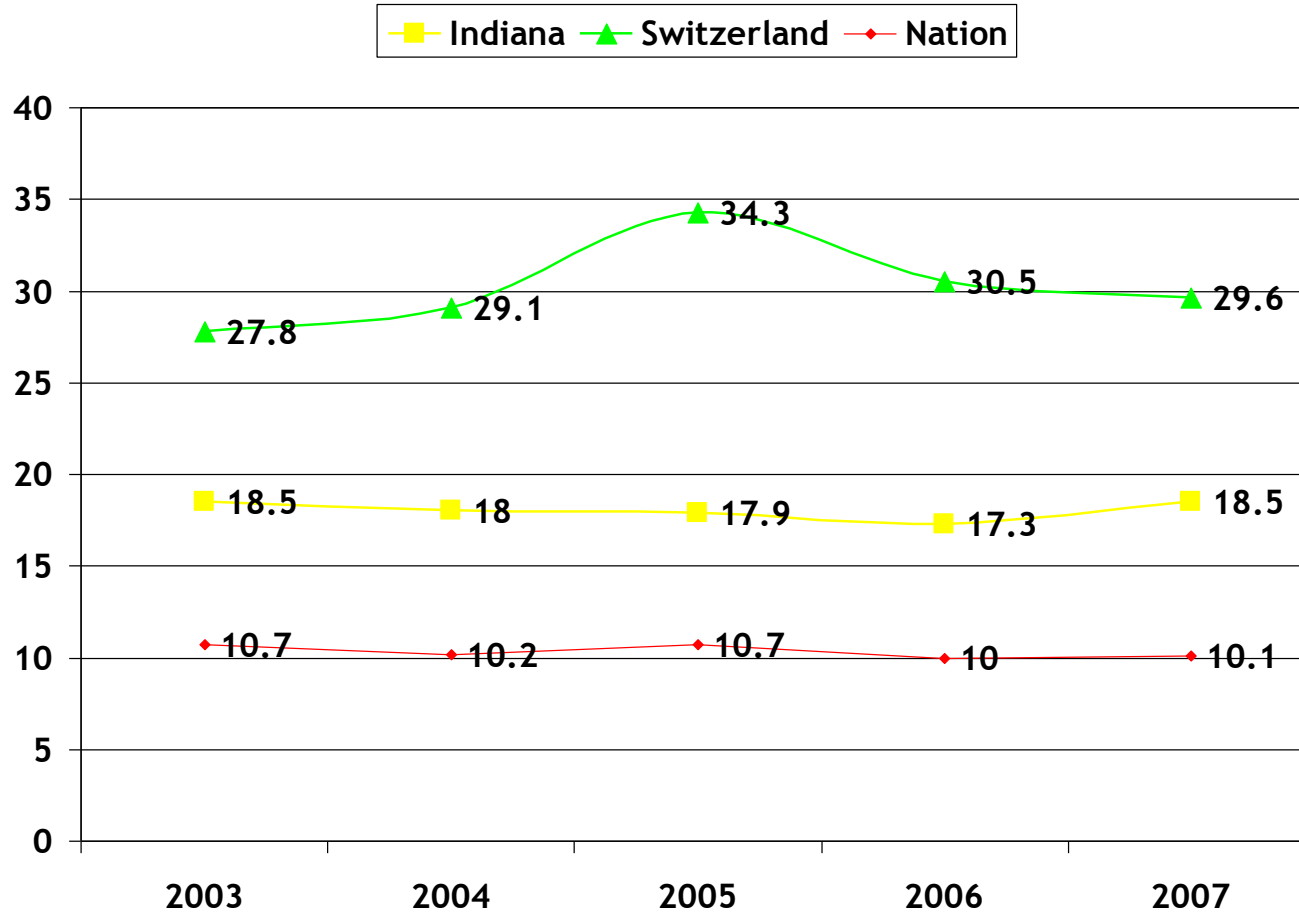
Prenatal Care in 1st Trimester

As a percentage



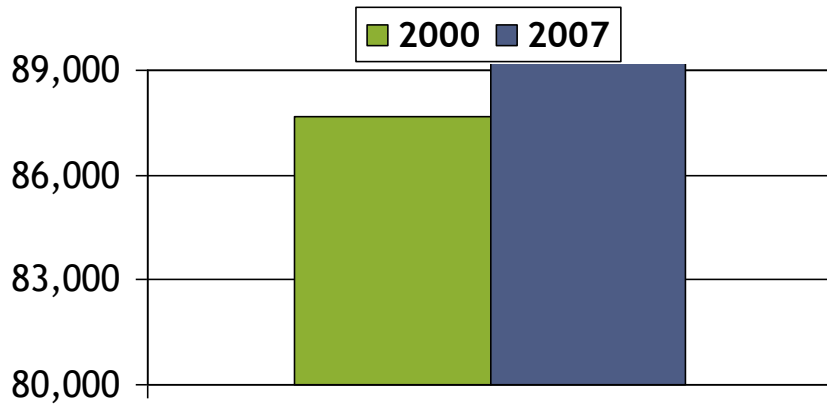
Smoking during Pregnancy

As a percentage



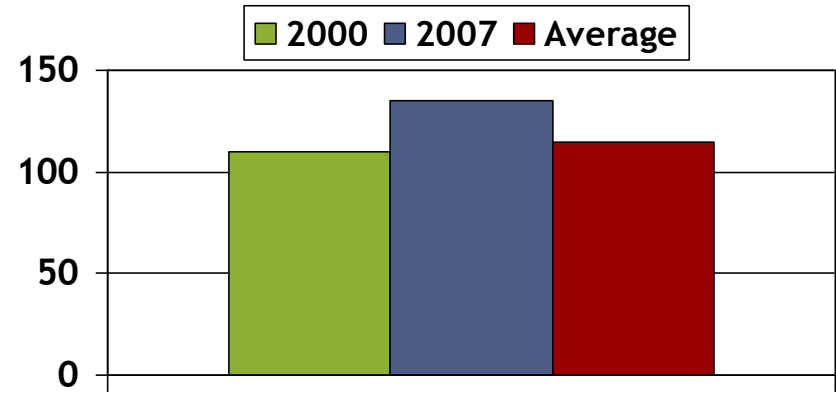
Live Births

Indiana



| 2000 | 2007 |
|--------|--------|
| 87,697 | 89,719 |

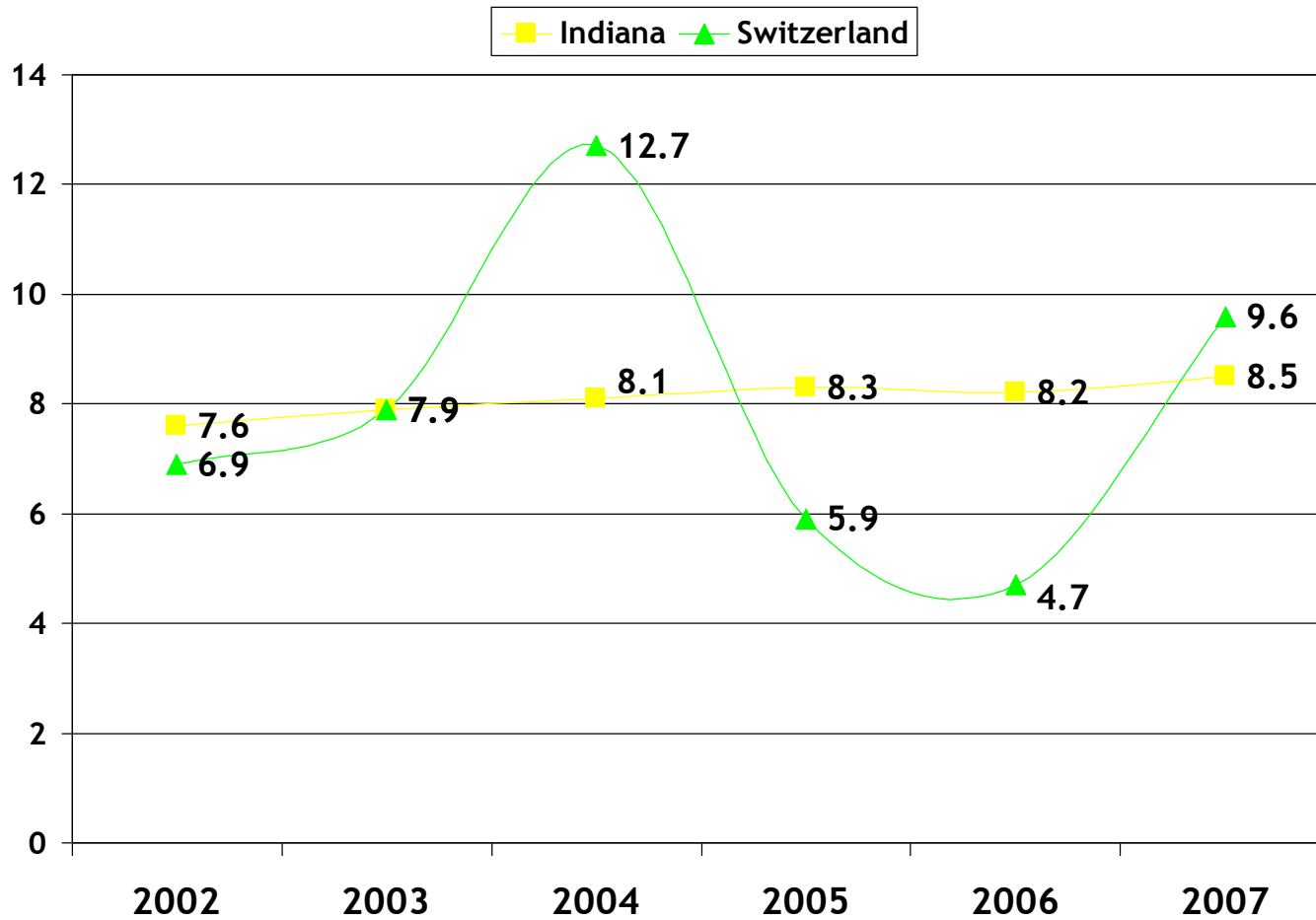
Switzerland County



| 2000 | 2007 | Avg. 2000-2007 |
|------|------|----------------|
| 110 | 135 | 115 |

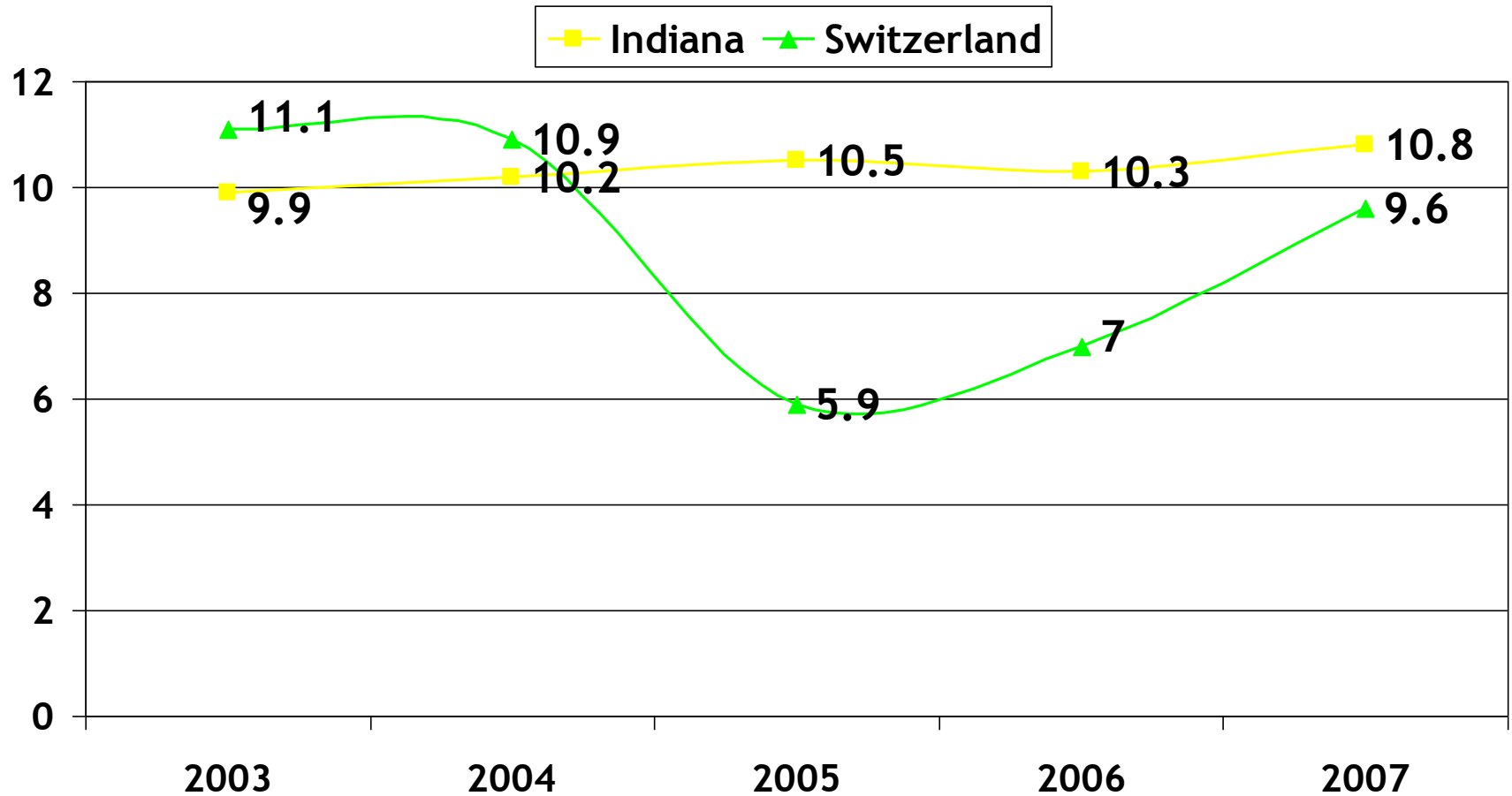
Low Birth Weight

As a percentage

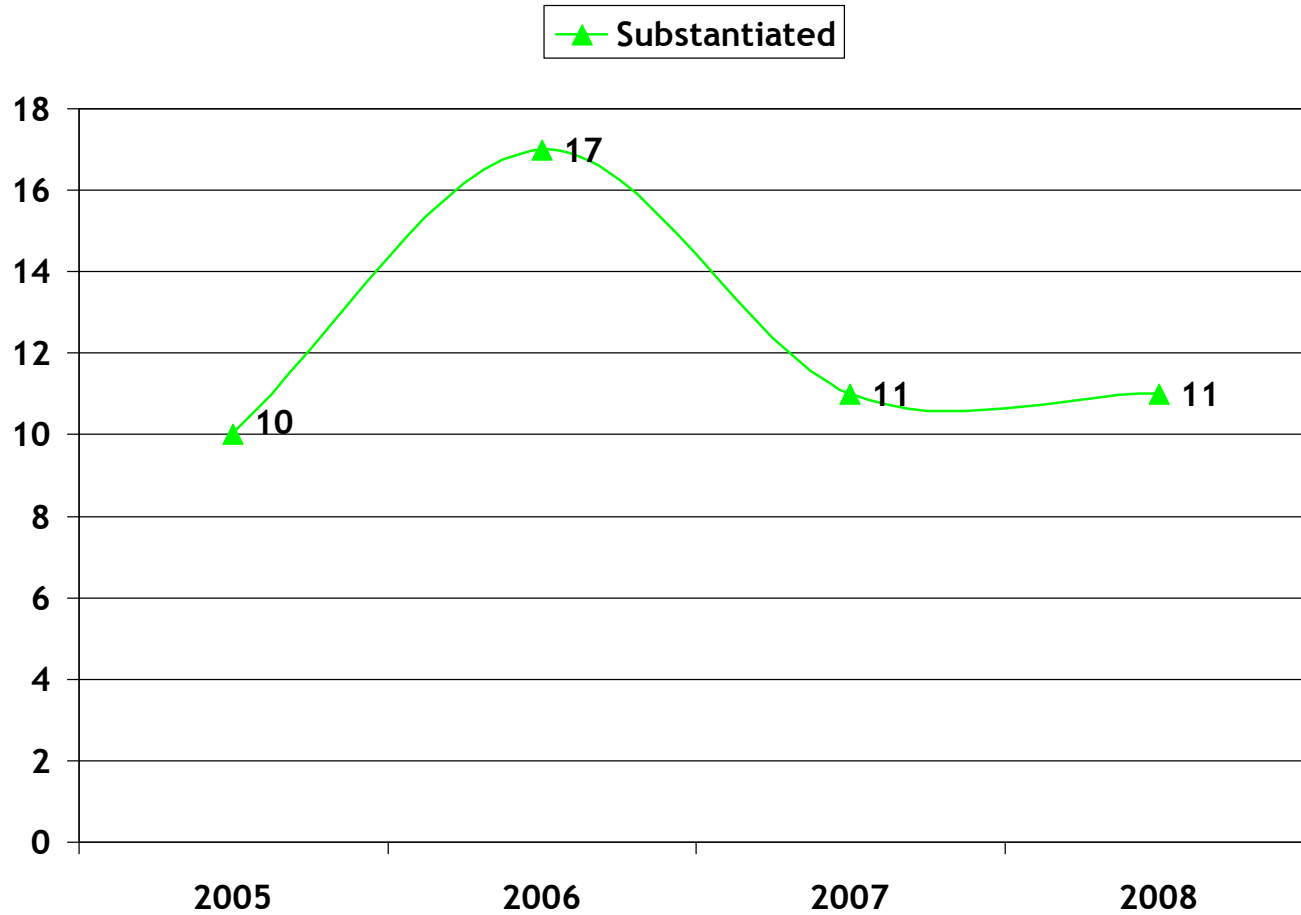


Preterm Births

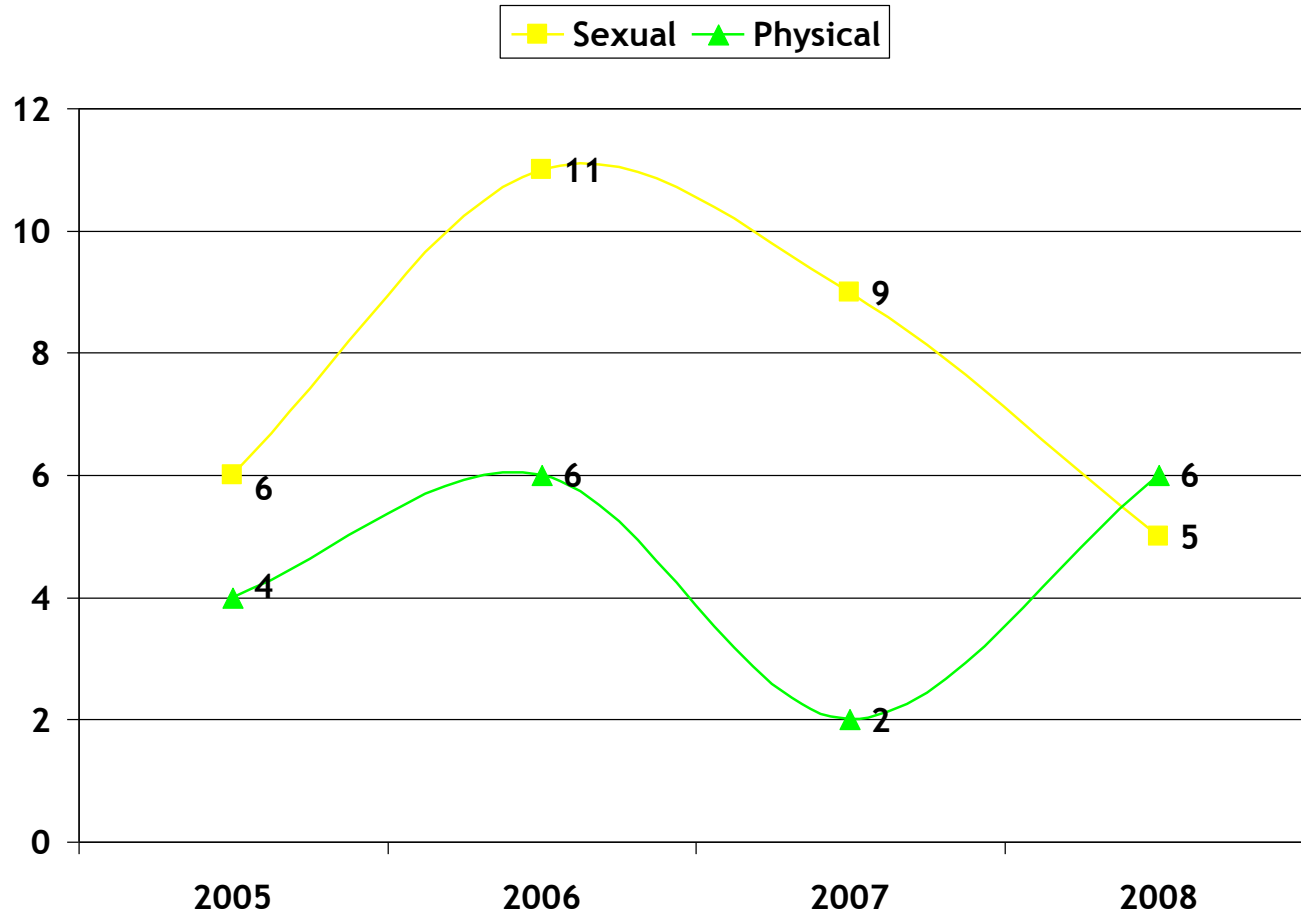
As a percentage



Child Abuse Cases



Specific Child Abuse Cases



Child Neglect Cases

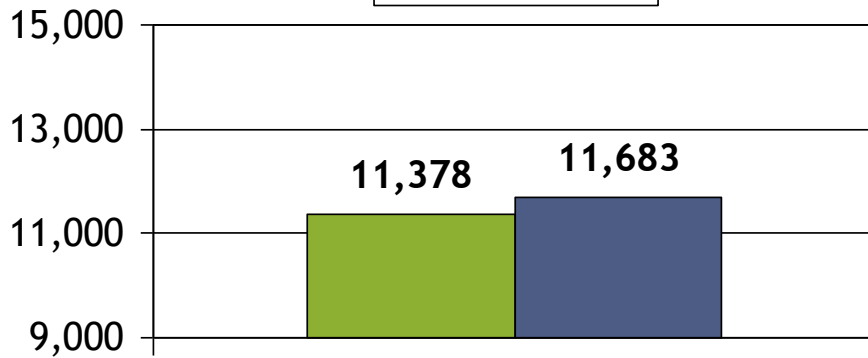


Teen Pregnancies

Teens ages 15 - 19 years old

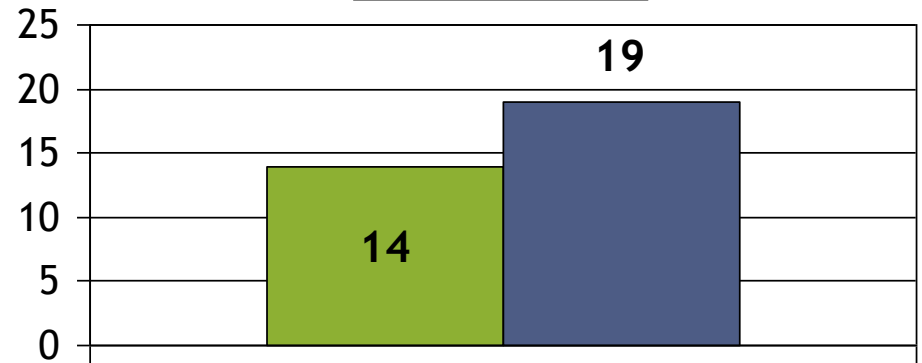
Indiana

2002 2007



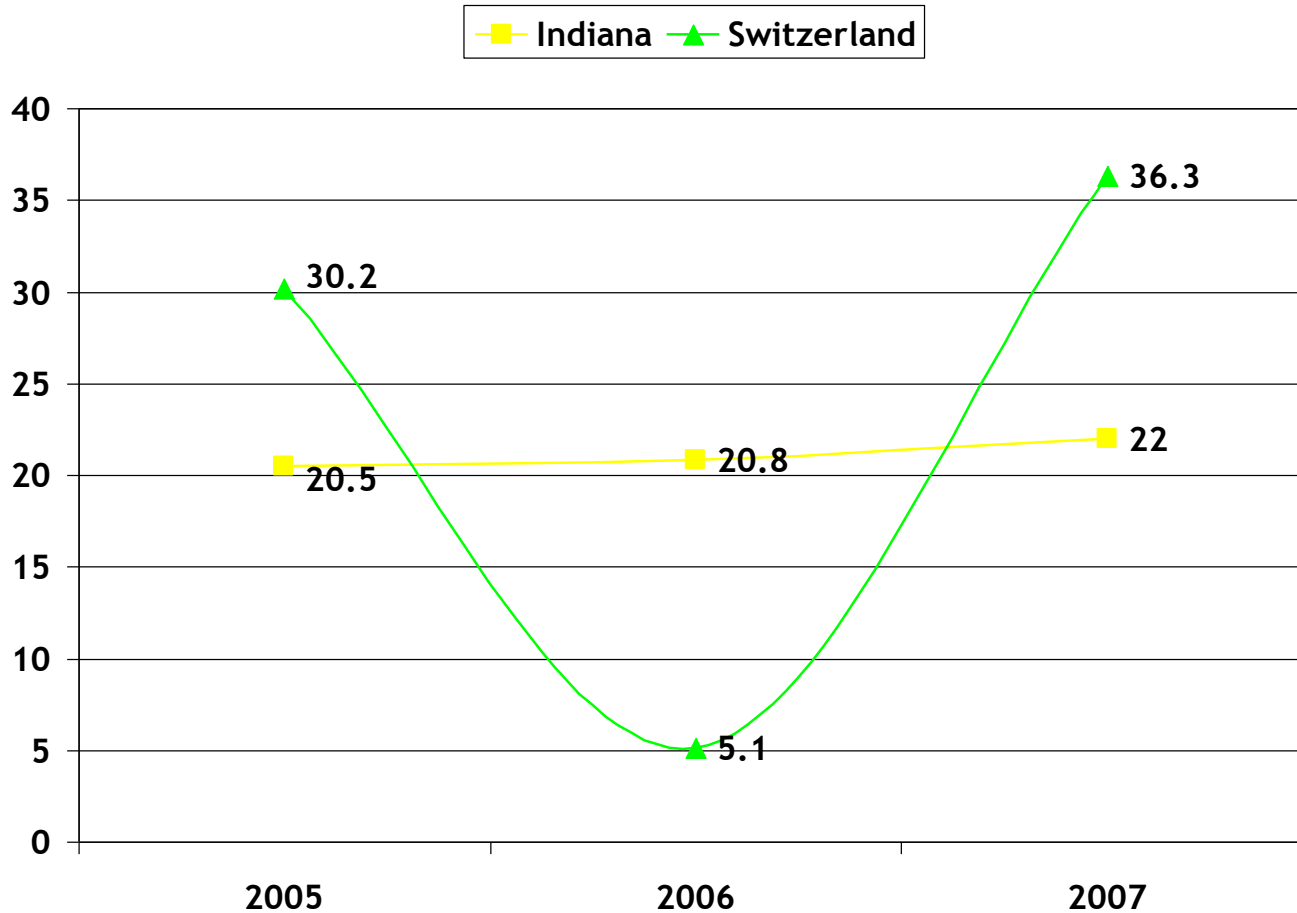
Switzerland

2002 2007



Teen Birth Rate

Per 1,000 Females Age 15-17



Infectious Diseases

Hepatitis C

| Hepatitis C | 2008 | 2006 |
|-------------|-------|-------|
| Indiana | 7,066 | 5,370 |
| Switzerland | <5 | 5 |

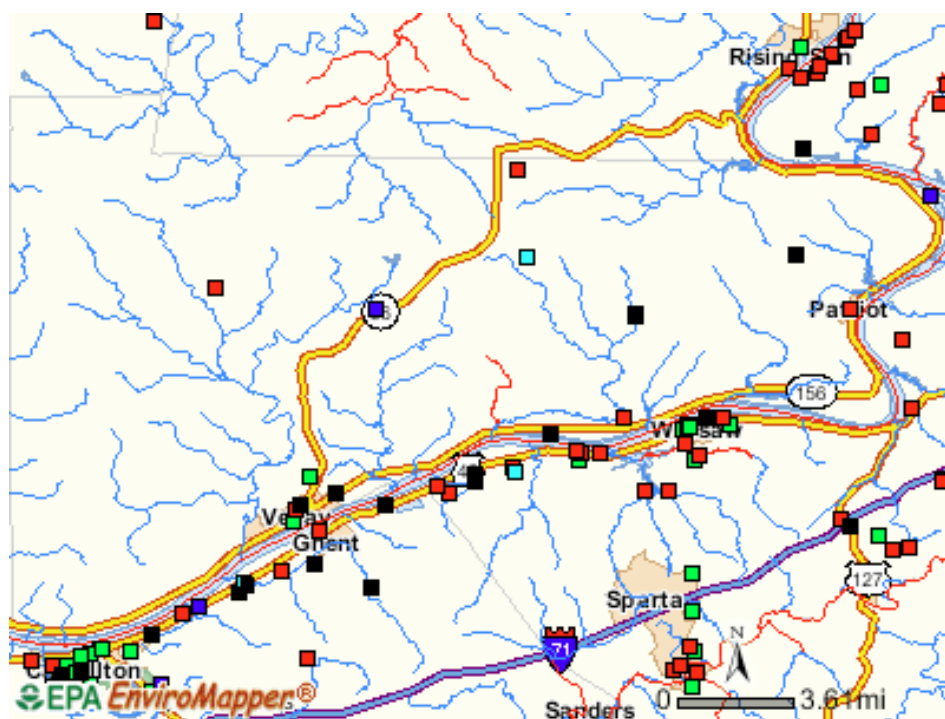
Sexually Transmitted Diseases

Newly diagnosed in the calendar year

| Chlamydia | 2008 | 2007 | 2006 |
|-------------|-----------|-----------|-----------|
| Nation | 1,210,523 | 1,108,374 | 1,030,911 |
| Indiana | 21,744 | 20,578 | 20,283 |
| Switzerland | 15 | 17 | 7 |

No data is available for Gonorrhea or Syphilis

Environmental Facts



LEGEND

- Discharges to water
- Superfund sites
- Hazardous waste
- Toxic releases
- Air releases
- Others
- Multiple
- Streets
- Water Bodies
- Counties

Air

Facilities that product and release air pollutants: 4

Toxics

Facilities that have reported toxic releases: 6

Waste

Facilities that have reported hazardous waste activities: 16

Water

Facilities issued permits to discharge to waters: 16

Community Water Systems that serve the same people year-round: 6

Watersheds: Silver-Little KY

Middle Ohio-Lauhery

Availability of Drugs

| | Switzerland | Indiana |
|---|-------------|---------|
| Alcohol Licenses | 30 | 13,079 |
| Alcohol Licenses per 1,000 persons | 3.02 | 2 |
| Tobacco Outlets | 10 | 4602 |
| Tobacco Outlets per 1,000 persons | 1.01 | 0.72 |
| Tobacco Outlets per 1,000 Youth (Ages 10 - 17) | 9.2 | 6.5 |
| Meth Lab Seizures by Any Agency | 0 | 1,059 |

Average Consumer Spending on Alcohol & Tobacco

| Alcohol Spending | Nation | Indiana | Switzerland |
|--|--------|---------|-------------|
| Average Annual Alcohol Spending per Household | \$617 | \$557 | \$500 |
| Above as Percentage of Median Household Income | 1.2 | 1.1 | 1.1 |

| Tobacco Spending | Nation | Indiana | Switzerland |
|--|--------|---------|-------------|
| Average Annual Tobacco Spending per Household | \$333 | \$317 | \$310 |
| Above as Percentage of Median Household Income | 0.64 | 0.62 | 0.69 |

Adult Gambling Behavior

Percent of Adults Age 18+

| Adult Gambling Behaviors | | | |
|---|-------------|-----------|-------------|
| | Switzerland | Indiana | Nation |
| Total Households | 4,277 | 2,466,944 | 113,634,428 |
| Gambled at Casino in Last 12 Months | 10.8 | 14.9 | 16.1 |
| Gambled at Casino 6+ times in Last 12 Months | 2 | 2.7 | 2.7 |
| Gambled in Las Vegas or Atlantic City in the Last 12 Months | 2.8 | 5.2 | 7.3 |
| Bought Lottery Ticket in Last 12 Months | 30.9 | 35.5 | 34.9 |
| Played Lottery 6+ Times in Last 30 Days | 10.1 | 12.3 | 11.5 |
| Played Bingo in Last 12 Months | 5 | 4.6 | 4.4 |

Problem Gambling

Individuals Enrolled in VEP (Indiana Gambling Voluntary Casino Self Exclusion Program) and Callers to the Indiana Problem Gambling Helpline

| | VEP Members | Called Helpline |
|----------------------|----------------|--------------------|
| Indiana | 3,608 | 843 |
| Switzerland | 17 | <5 |
| IN County Average | 39.7 | 9.2 |

Alcohol Related Fatalities

Percentage with Blood Alcohol Concentration (BAC) Level of 0.1 or Higher

| Fatalities with BAC Level of 0.1+ | |
|---|----|
| Nation | 37 |
| Indiana | 29 |
| Switzerland | 30 |

Problem Gambling

Individuals Enrolled in VEP (Indiana Gambling Voluntary Casino Self Eclusion Program) and Callers to the Indiana Problem Gambling Helpline

| | VEP Members | Called Helpline |
|----------------------|----------------|--------------------|
| Indiana | 3,608 | 843 |
| Switzerland | 17 | >5 |
| IN County Average | 39.7 | 9.2 |

Methamphetamine Abuse

Labs Found to be Producing Methamphetamine

Average Number of
Labs Found in
Indiana Counties:

14.6

| Total Number of Labs | |
|-------------------------|------|
| Indiana | 1343 |
| Switzerland | 3 |

Primary Care Physicians & Non-Physician Clinicians

Switzerland County

Rate of Primary Care
Physicians & Non Physician
Clinicians per 100,000
population:

10.3

Indiana Average Rate:

71.9

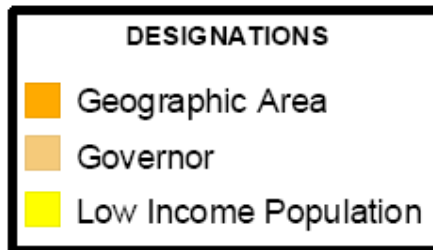
| Type | Number |
|--------------------------------------|----------|
| Family Medicine | 1 |
| General Internal Medicine | 0 |
| General Pediatric | 0 |
| Osteopathic | 0 |
| Primary Care Physician Assistants | 0 |
| Nurse Practitioners | 1 |
| TOTAL | 2 |

Primary Care Health Professional Shortage Areas



Switzerland County has a shortage of health care professionals

Medically Underserved Areas



All areas in Switzerland County are considered medically underserved.

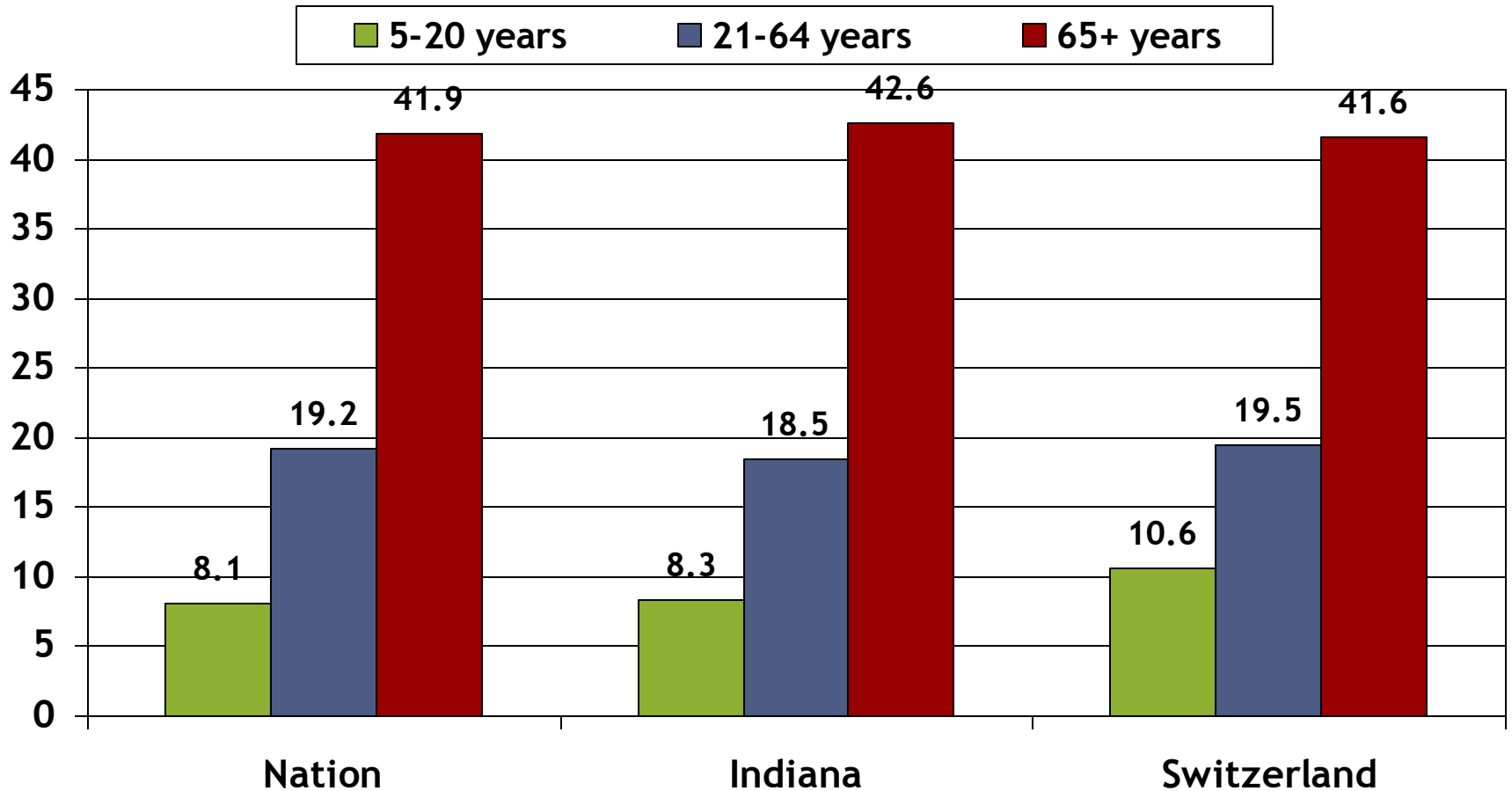
Mental Health Professional Shortage Areas



Switzerland County has a shortage of mental health professionals.

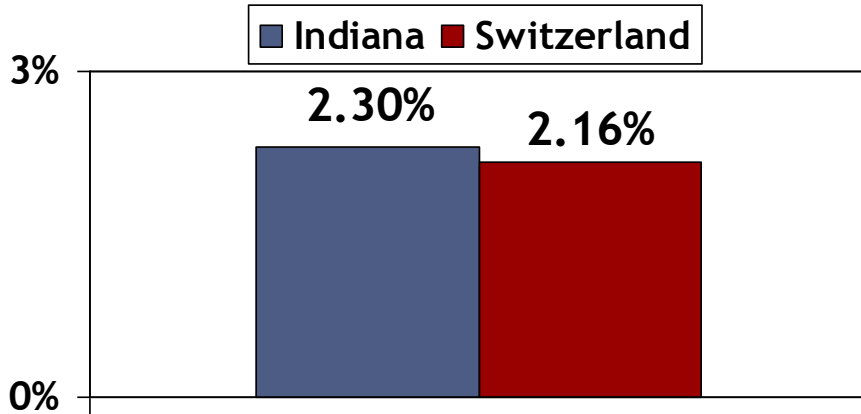
With Disability

Noninstitutionalized

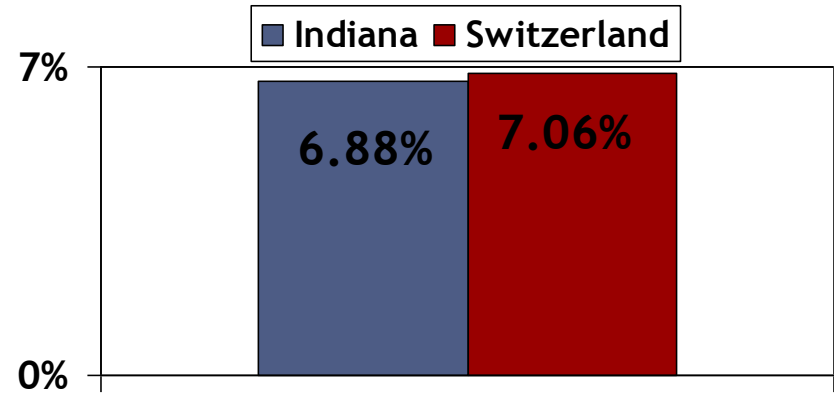


Asthma

Pediatric



Adult



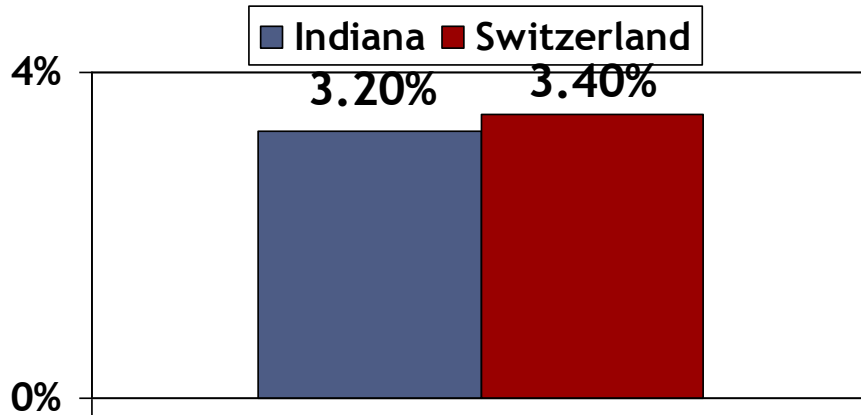
| Pediatric Asthma | |
|------------------|---------|
| | Cases |
| Indiana | 149,179 |
| Switzerland | 210 |

| Adult Asthma | |
|--------------|---------|
| | Cases |
| Indiana | 439,352 |
| Switzerland | 685 |

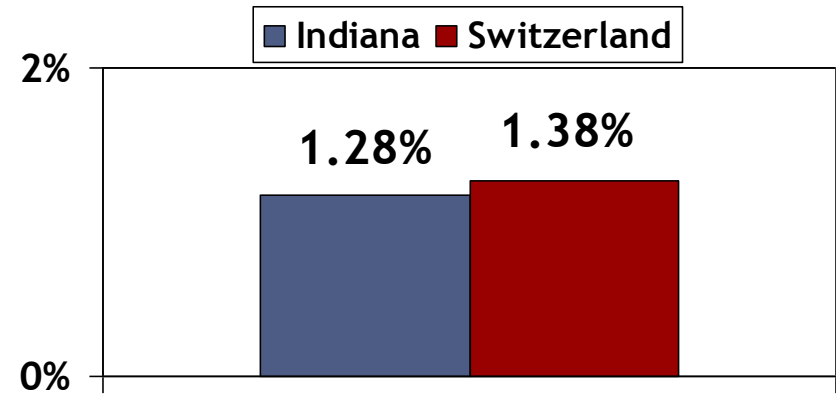
Source: American Lung Association "Estimated Prevalence and Incidence of Lung Disease" - January 2010

Lung Diseases

Chronic Bronchitis



Emphysema

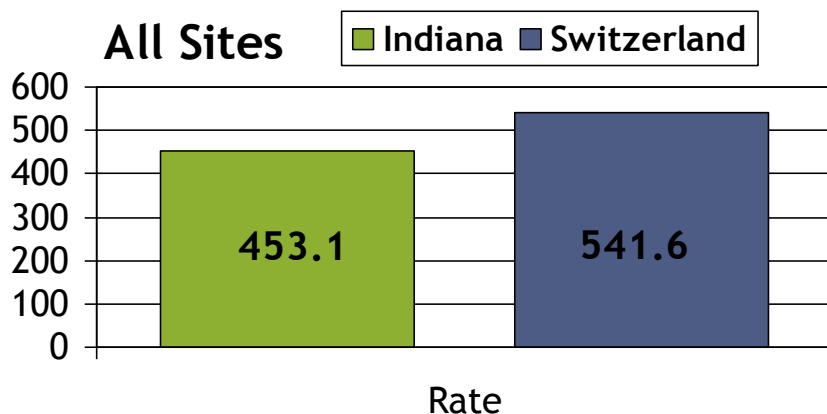


| Chronic Bronchitis | Cases |
|--------------------|---------|
| Indiana | 209,660 |
| Switzerland | 330 |

| Emphysema | Cases |
|-------------|--------|
| Indiana | 81,769 |
| Switzerland | 134 |

Source: American Lung Association "Estimated Prevalence and Incidence of Lung Disease" - January 2010

Incidences of Cancer, 2004



Lung: No rate is available. Rates that are based on fewer than 20 are unstable and are suppressed.

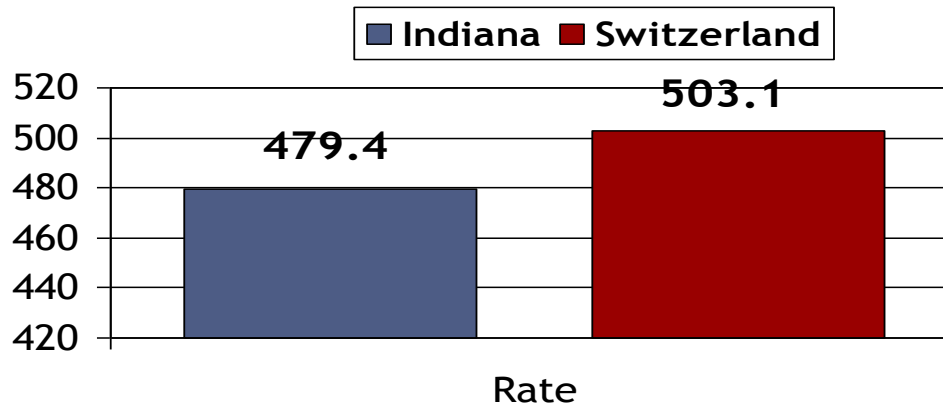
| All Sites | # of Cases |
|-------------|------------|
| Indiana | 28,556 |
| Switzerland | 54 |

| Lung | # of Cases |
|-------------|------------|
| Indiana | 4,810 |
| Switzerland | 7 |

Incidences of Cancer: All Sites

Counts and Rates are for the years of 2003 - 2007

Rate is age adjusted 100,000 population to the 2000 U.S. Population Standard

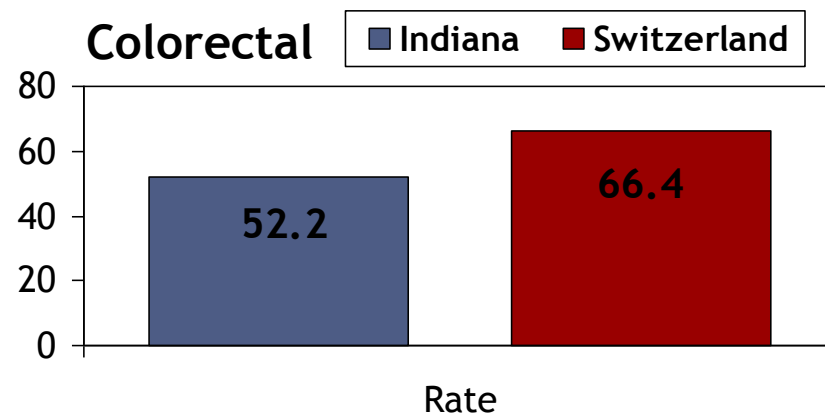
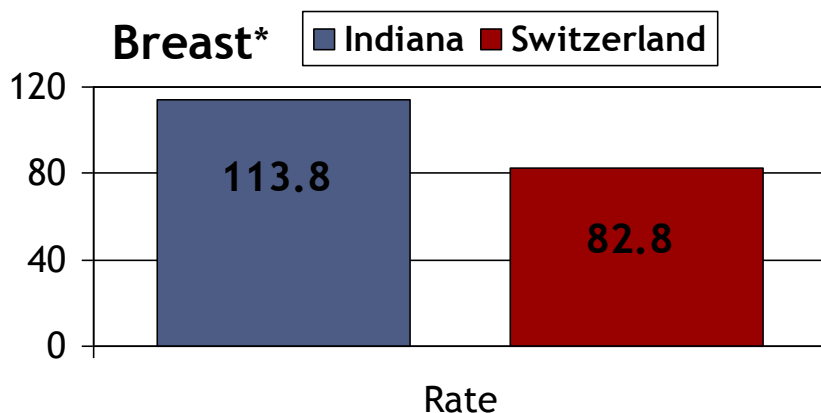


| All Sites | Average Annual Count |
|-------------|----------------------|
| Indiana | 30,527 |
| Switzerland | 51 |

Incidences of Cancer: Breast & Colorectal

Counts and Rates are for the years of 2003 - 2007

Rate is age adjusted 100,000 population to the 2000 U.S. Population Standard



| Breast | Average Annual Count |
|-------------|----------------------|
| Indiana | 3,952 |
| Switzerland | ** |

| Colorectal | Average Annual Count |
|-------------|----------------------|
| Indiana | 3,325 |
| Switzerland | 7 |

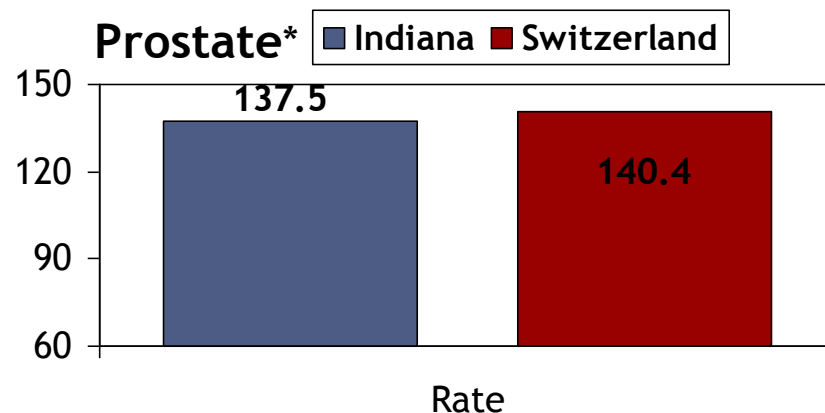
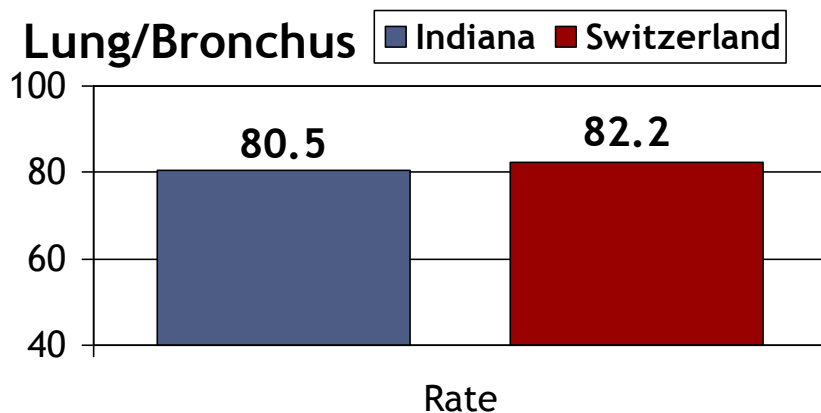
•Only calculated for females

**Count has been suppressed to prevent confidentiality

Incidences of Cancer: Lung/Bronchus & Prostate

Counts and Rates are for the years of 2003 - 2007

Rate is age adjusted 100,000 population to the 2000 U.S. Population Standard



| Lung/Bronchus | Average Annual Count |
|---------------|----------------------|
| Indiana | 5,044 |
| Switzerland | 9 |

| Prostate | Average Annual Count |
|-------------|----------------------|
| Indiana | 3,859 |
| Switzerland | 7 |

* Only calculated for males

Mental Health

| | Adults with Serious Mental Illness | Seriously Emotionally Disturbed Children | Co-Occurring Disorders |
|--------------|------------------------------------|--|------------------------|
| All Counties | 247,285 | 51,470 | 57,374 |
| Switzerland | 379 | 78 | n/a |

Causes of Death

| Locale | Heart Disease | Diabetes | Cancer | Pneumonia / Flu |
|-------------|---------------|----------|--------|-----------------|
| Indiana | 18,020 | 1,564 | 12,750 | 1,095 |
| Switzerland | 28 | 3 | 20 | 3 |

| Locale | Suicide | Homicide | Non-Motor Vehicle Accidents | Motor Vehicle Accidents |
|-------------|---------|----------|-----------------------------|-------------------------|
| Indiana | 788 | 372 | 1,515 | 914 |
| Switzerland | 0 | 0 | 3 | 3 |

Heart Related Deaths

Rate per 100,000 population

| Major Cardio-Vascular Diseases | 2007 | 2006 | 2005 |
|--------------------------------|-------|-------|-------|
| Nation | 190.9 | 211.0 | 220.0 |
| Indiana | 267.2 | 285.7 | 295.0 |
| Switzerland | 276.3 | 339.8 | 289.8 |

| Ischemic Heart Disease | 2007 | 2006 | 2005 |
|------------------------|-------|-------|-------|
| Nation | n/a | 142.1 | n/a |
| Indiana | 125.5 | 138.7 | 141.6 |
| Switzerland | 114.4 | 178.8 | 103.1 |

Respiratory Death Rates

Rate per 100,000 population

| Chronic Lower Respiratory Disease (CLRD) | 2007 | 2006 |
|--|------|------|
| Nation | n/a | 41.6 |
| Indiana | 49.1 | 50.6 |
| Switzerland | 29.9 | 59.8 |

Stroke Death Rate

Rate per 100,000 population

| | 2007 | 2006 | 2005 |
|-------------|------|------|------|
| Nation | 45.1 | 45.8 | 48.4 |
| Indiana | 44.5 | 48.7 | 50.2 |
| Switzerland | 67.9 | 32.4 | 59.6 |

Major Employers in Switzerland County

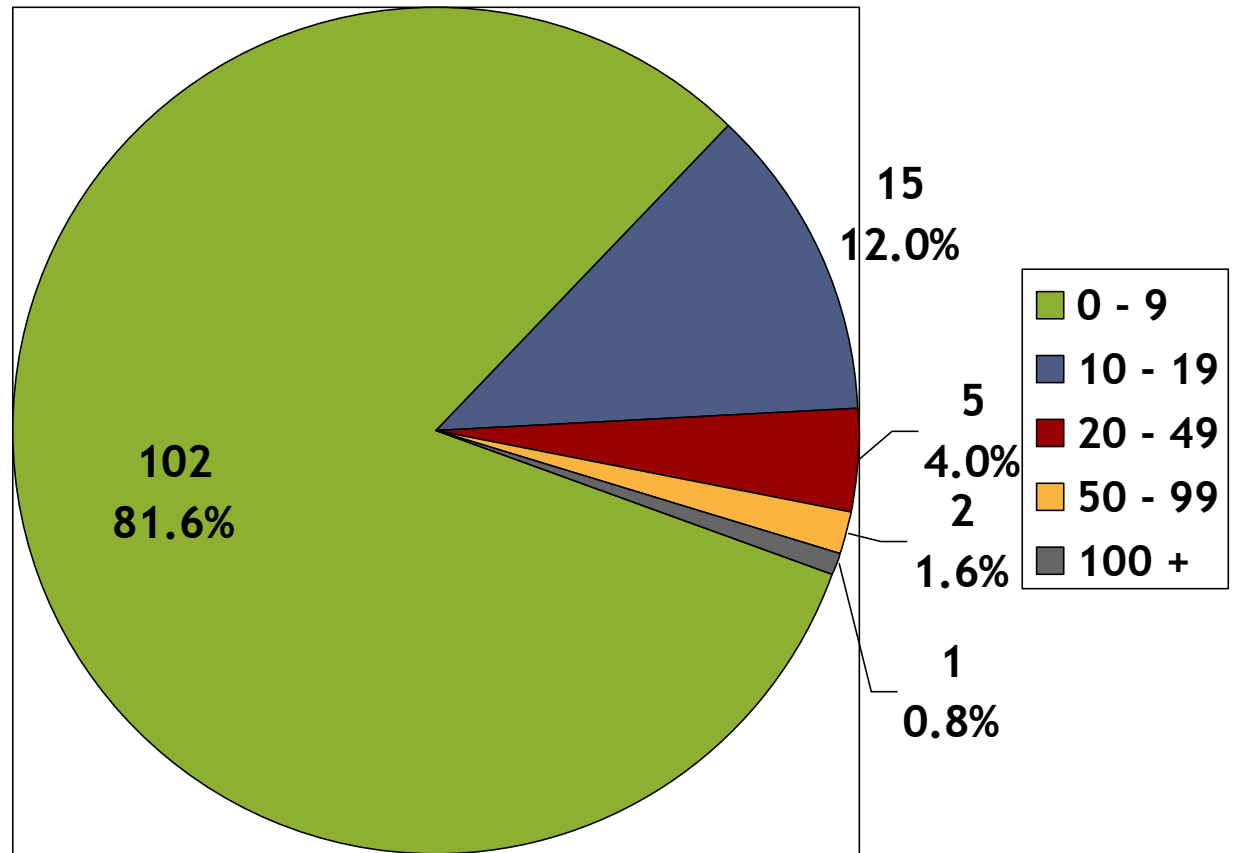
- **Belterra Casino Resort and Spa**
 - In 2003, employs 1,126 associates
- **Manufacturing Companies**
 - Swiss Caps
 - Besi Industries

Major Employers in Close Proximity

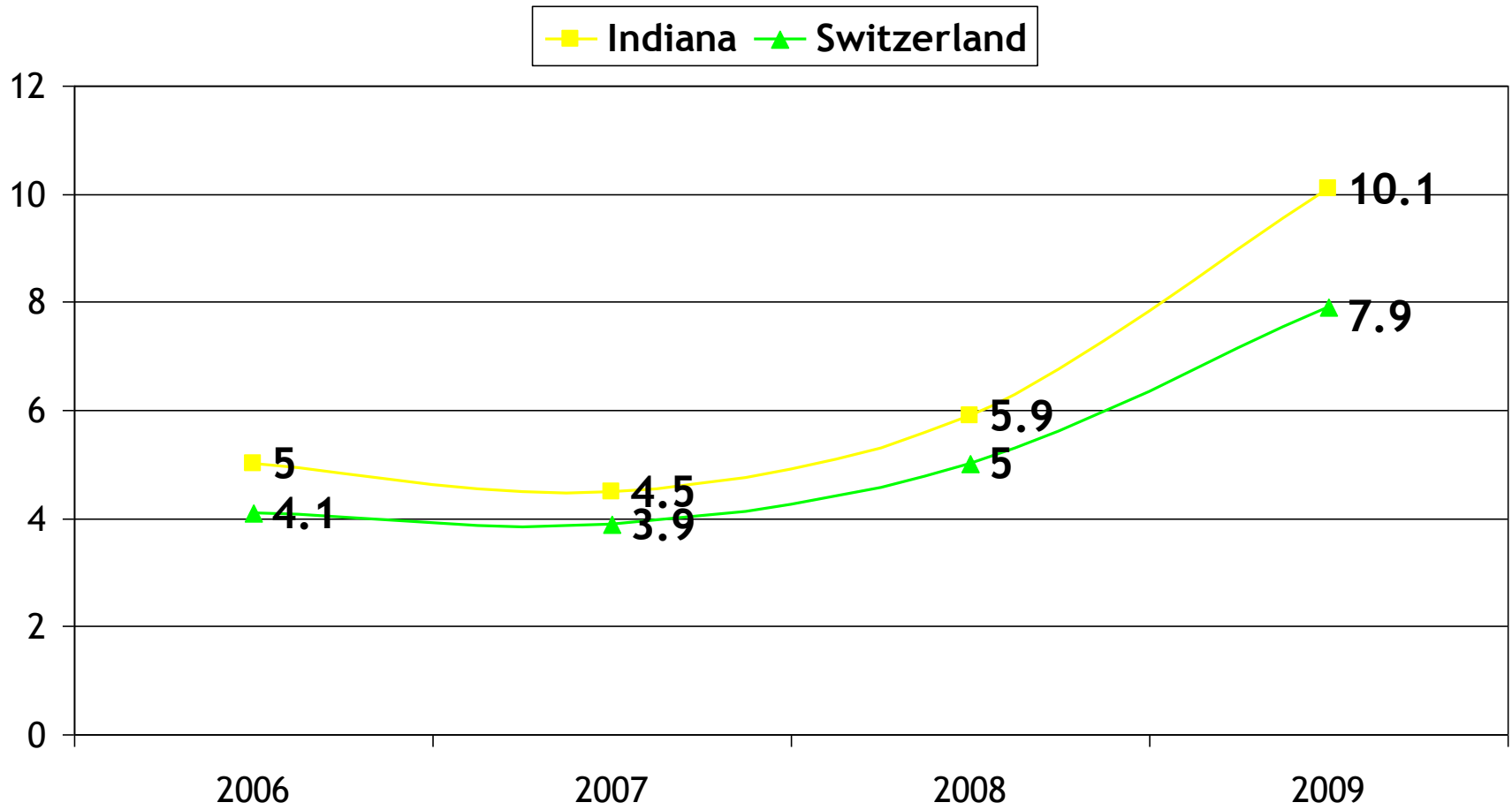
- Dow Corning (Carrollton, KY - Carroll Co.)
- North American Stainless (Carrollton, KY - Carroll Co.)
- Gallatin Steel (Carrollton, KY - Carroll Co.)
- Grote Industries (Madison, Jefferson Co.)
- Hillenbrand Industries (Batesville, Jefferson Co.)
- INTAT Precision (Rushville, Rush Co.)
- Visteon Automotive Systems (Connersville, Fayette Co.)

Firms and Employment by Size - 2007

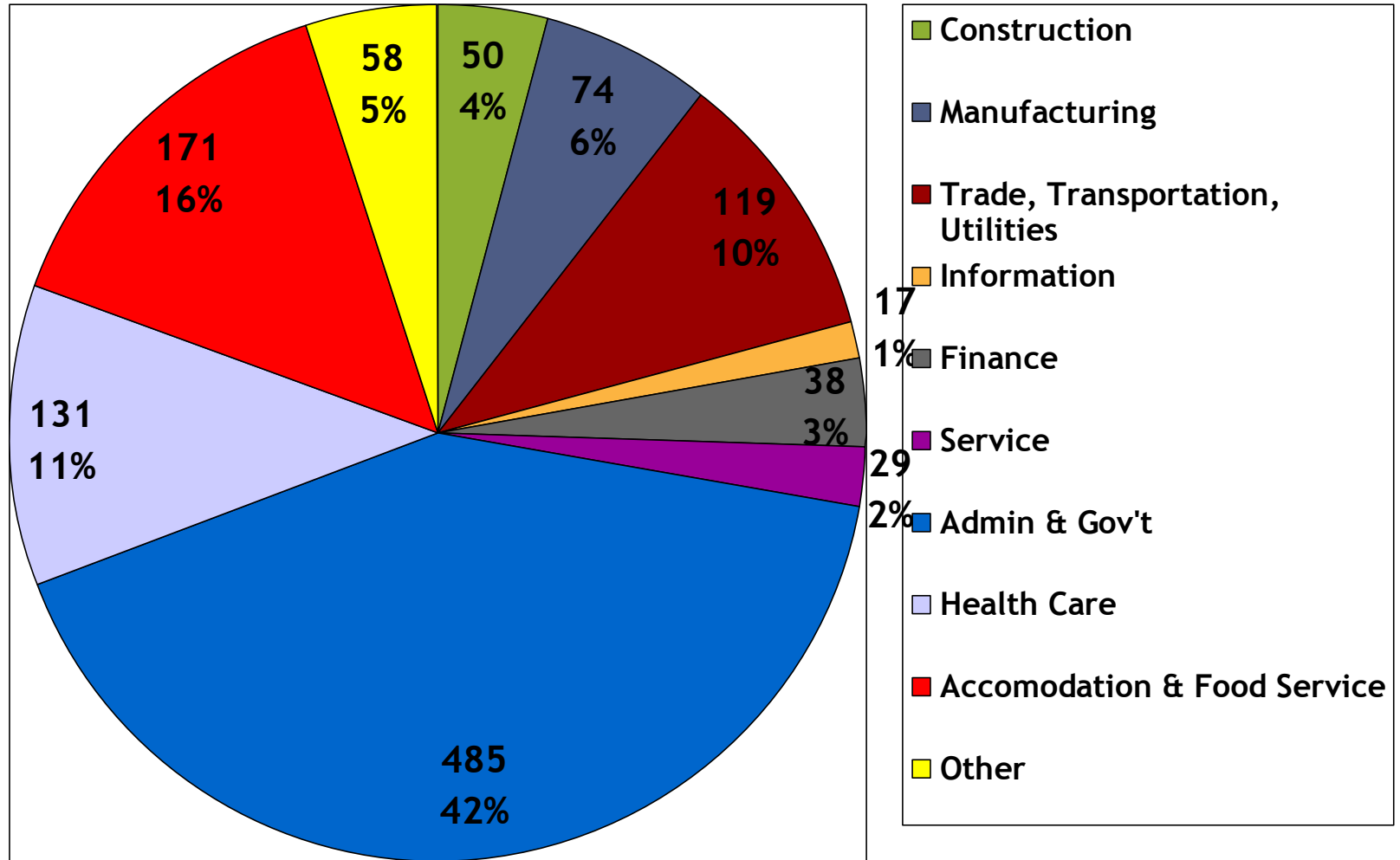
Total Business
Units: 125



Unemployment Rate



Employment by Sector, 2008



Land Use

Crops: Tobacco

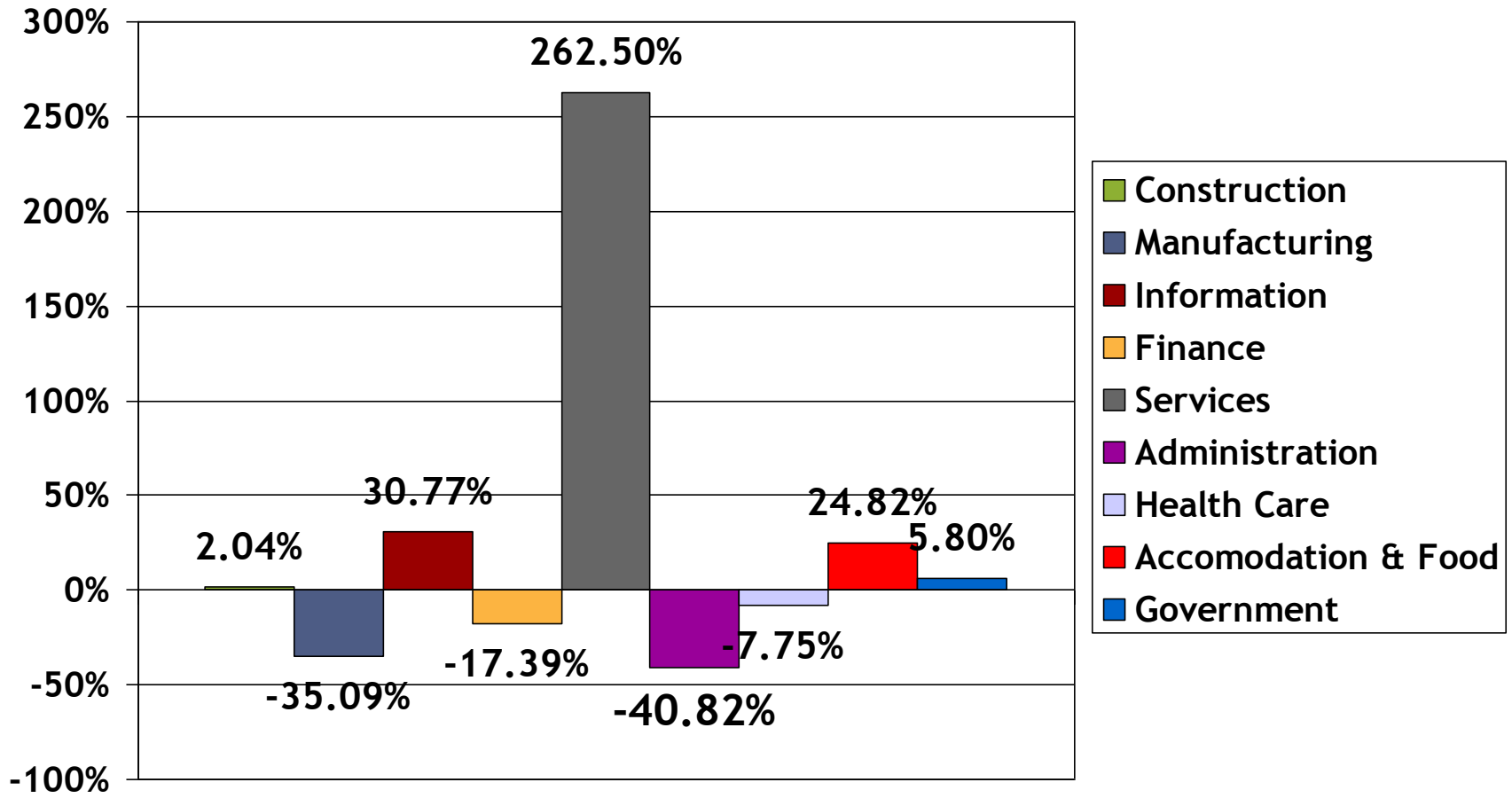
| Rank in State for Acreage | 2007 County Tobacco Crop Sales |
|---------------------------|--------------------------------|
| 2 | \$834,000 |

| | Harvested Acres | Production In (000) lbs |
|------|-----------------|-------------------------|
| 2004 | 842 | 1,898 |
| 2007 | 273 | 628 |

Source: US Census/Indiana Agricultural Statistics - 2007

Employment by Sector

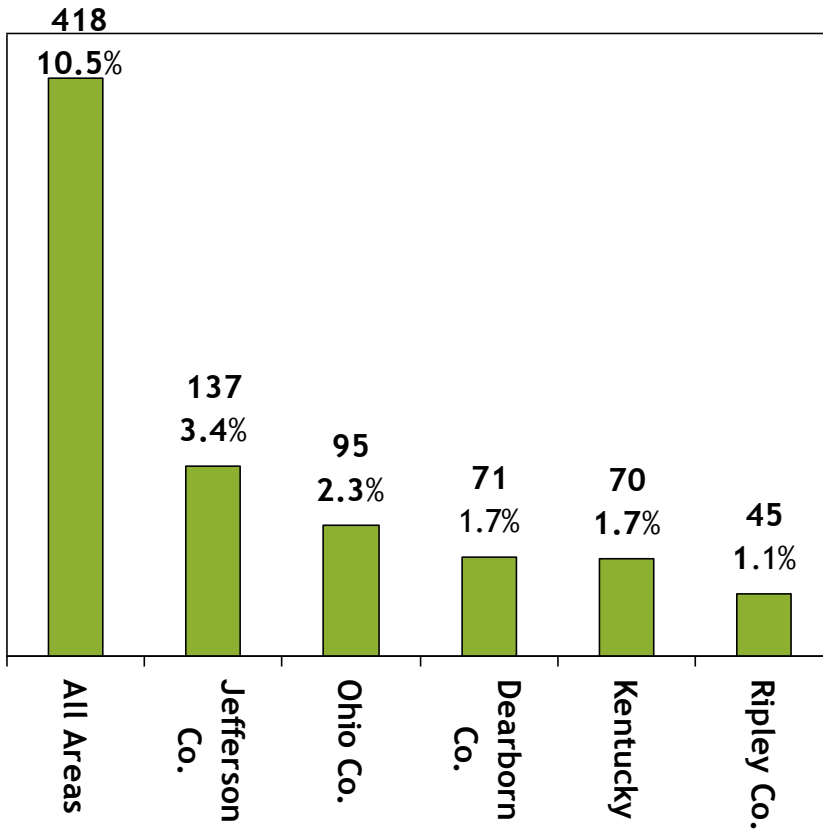
Percent Change 2004 - 2008



Commuting Patterns

Top Five in 2008

Into Switzerland FROM



Out of Switzerland TO

